

PUBLIC ONLINE AUCTION

INSPECT ONSITE AND BID ONLINE

MAJOR METAL RECYCLING & PROCESSING FACILITY

TIMED ONLINE AUCTION: WEDNESDAY, OCTOBER 22 STARTING AT 10:00 AM PDT

INSPECTION: MONDAY, OCTOBER 20 & TUESDAY, OCTOBER 21 FROM 9:00 AM TO 3:00 PM PDT

LOCATION: 10019 SOUTH ALAMEDA STREET, LOS ANGELES, CA 90002



2020



2024



2023



2015



2017



2018



2014



2012

2020 SENNEBOGEN 830 M E-SERIES & LINK-BELT 240X2MH MATERIAL HANDLERS, 2023 KOMATSU PC240LC-11, 2017 LIEBHERR R936LC, 2013 KOMATSU PC240LC-10 & 2005 CATERPILLAR 320 CLU EXCAVATORS, 2023-2015 GENESIS 665R & 445R MOBILE SHEAR ATTACHMENTS, 2015 HYSTER & MITSUBISHI FORKLIFTS, 2024 CATERPILLAR 262D3 SKID STEER, 2014 KENWORTH & 2012 FREIGHTLINER ROLL OFF TRUCKS, 2012 PETERBILT & 2009 FREIGHTLINER TRUCK TRACTORS, SCRAP TRAILER, PICKUP TRUCKS, ALLIGATOR SHEARS, HARRIS HRB SCRAP BALER, AQUIP WATER FILTRATION TREATMENT SYSTEM, MQ POWER 300 KVA GENERATOR, (60) ROLL OFF BOXES, (40) 45' HIGH CUBE SHIPPING CONTAINERS, SCRAP BINS, (700) CONCRETE BUILDING BLOCKS, FLOOR SCALES, SHOP EQUIPMENT AND RELATED ITEMS



UNITED
ASSET SALES
ROY GAMITYAN, AUCTIONEER

ROY GAMITYAN, AUCTIONEER

23945 Calabasas Road, Suite 209, Calabasas, CA 91302
Office 818.264.4232 | roy@unitedassetsales.com

WWW.UNITEDASSETSALES.COM

PUBLIC ONLINE AUCTION

INSPECT ONSITE AND BID ONLINE

MAJOR METAL RECYCLING & PROCESSING FACILITY

TIMED ONLINE AUCTION:

WEDNESDAY, OCTOBER 22 STARTING AT 10:00 AM PDT

INSPECTION:

MONDAY, OCTOBER 20 & TUESDAY, OCTOBER 21
FROM 9:00 AM TO 3:00 PM PDT

INSPECTION LOCATION:

10019 SOUTH ALAMEDA STREET,
LOS ANGELES, CA 90002

TERMS OF PAYMENT:

CASHIER'S CHECK, BUSINESS CHECK WITH BANK
LETTER OF GUARANTEE, BANK WIRE TRANSFER.
FULL PAYMENT MUST BE MADE NO LATER
THAN 24 HOURS OF WINNING BID.

REMOVAL:

ALL ITEMS MUST BE REMOVED NO LATER
THAN FRIDAY, NOVEMBER 7. NO EXCEPTIONS.
PREPPING, REMOVAL, LOADING & TRUCKING
IS THE RESPONSIBILITY OF THE BUYER.

BUYER'S PREMIUM:

18% FOR ALL PURCHASES

FOR COMPLETE SALE INFO: 818.264.4232
OR VISIT WWW.UNITEDASSETSALES.COM
EMAIL: ROY@UNITEDASSETSALES.COM

ONLINE BIDDING PROVIDED BY

BidSpotter



UNITED
ASSET SALES
ROY GAMITYAN, AUCTIONEER

WWW.UNITEDASSETSALES.COM

23945 Calabasas Rd., Ste. 209, Calabasas, CA 91302

Office 818.264.4232 | roy@unitedassetsales.com

ROY GAMITYAN, AUCTIONEER
CA Bond# 63388305

MOBILE MATERIAL HANDLERS

2020



2020 SENNEBOGEN 830 M E-SERIES,
CUMMINS B6.7 DIESEL ENGINE,
225 HP, 55'9" REACH, MAXCAB
II ELEVATING CAB SYSTEM E270,
K15 - REACH 50'3, STRAIGHT BOOM
27'11, END STOP MONITORING
SYSTEM AND LIMIT SWITCHES,
STRAIGHT STICK 23', WITH END
STOP MONITORING SYSTEM AND
LIMIT SWITCHES, RUBBER TIRES,
ALL WHEEL DRIVE, 4-POINT 9'
OUTRIGGERS, COMPUTER FREE,
STATE-OF-THE-ART LOAD-SENSING
WITH FLOW-ON-DEMAND CONTROL,
S/N 830.0.2962, STANDARD
MACHINE CONFIGURATION,
CLAMSHELL GRAB ATTACHMENT

2017



2017 LINK-BELT 240X2MH,
S/N HICK2-5272, MANUFACTURER
NO. LBX24005NCMHX1380,
ROTOBEC OP-4 GRAPPLE
ATTACHMENT, S/N 133809

2008 TEREX FUCHS, MODEL MHL350,
DEUTZ 6 CYLINDER 198 HP TIER III
ENGINE, HYDRAULIC ELEVATING CAB,
S/N M350/1612, PARTS ONLY

MOBILE SHEARS

2015 GENESIS GTX 665R, S/N 6651049

2017 GENESIS GTX 445R, S/N 4451064

ALLIGATOR SHEARS

RECYCLING EQUIPMENT SOLUTIONS 16", S/N N/A
ENTERPRISE 216L MC, S/N E-3684



SCRAP METAL BALING PRESS

HARRIS HRB, (1) HORIZONTAL IN GROUND CONVEYOR,
(1) ELEVATOR CONVEYOR, MODEL HRB-918W-BD, S/N 2572



GENERATOR

2009 MQ POWER
WHISPERWATT
DIESEL POWERED AC
GENERATOR, MODEL
DCA-300SSCU,
300-349 KVA, S/N
9100007, W/CUMMINS
DIESEL ENGINE,
W/ 20' CONTAINER

EXCAVATORS

2023 KOMATSU PC240LC-11, HYDRAULIC, 2023 GENESIS GXT 445R SHEAR ATTACHMENT, S/N K73251
2017 LIEBHERR R936LC EX, HYDRAULIC, GENESIS GXT 665R SHEAR ATTACHMENT, S/N VR 40343
2013 KOMATSU PC240LC-10, HYDRAULIC, 19'2" BOOM, 10' ARM, S/N A20318
2005 CATERPILLAR 320 CLU, HYDRAULIC, BUCKET & THUMB, S/N CAT0320CJPAC00429



2005



2023



2017

FORKLIFTS

2024 NOBLELIFT, ELECTRIC, MODEL FE4P110-189, 12,000 LB CAPACITY, 3-STAGE MAST W/ ROTATOR, SIDE SHIFTER ATTACHMENT, 4' FORKS, LOAD & REAR LIGHTS, SOLID CUSHION TIRES, S/N 1DE32860-IN
2015 HYSTER 90 FORTIS, LPG, MODEL H90FT, 10,000 LB CAPACITY, 3-STAGE MAST W/ ROTATOR, 5' FORKS, APPROX. 17044 HOURS, SOLID CUSHION TIRES, HYDRA SMOOTH RAM, S/N U005V02223N
2018 MITSUBISHI, LPG, MODEL FG50CN, 9,000 LB CAPACITY, 3-STAGE MAST W/ ROTATOR, 48" FORKS, LPG, LOAD LIGHTS, APPROX. 6040 HOURS, S/N AF29D90841, ATTACHMENT: SSH059P40I
HYSTER, DIESEL, 30,000 LB CAPACITY, 8' FORKS



2018

SKID STEER LOADER

2024 CATERPILLAR 262D3, CATERPILLAR SSL GRAP72 GRAPPLE 72" BUCKET ATTACHMENT, APPROX. 571.8 HOURS, S/N TP402380



2024



2015



2024



ROLL OFF TRUCKS

2014 KENWORTH MODEL T440, PACCAR PX-9 DIESEL ENGINE, APPROX. 227,657 MILES, REG. THRU OCTOBER 2025, CA LIC. PLATE: 8S08334, VIN: 1NKBLJ0X0EJ410347
2012 FREIGHTLINER CASCADIA 125, CUMMINS DIESEL ENGINE, REG. THRU MAY 2025, CA LIC. PLATE: 51400B4, VIN: 1FUJGEBG8CLBW7874



2014



2012

TRUCK TRACTORS

2012 PETERBILT 386, DIESEL ENGINE, REG. THRU MAY 2025, CA LIC. PLATE: 9E63053, VIN: 1XPHD49X2CD144076
2009 FREIGHTLINER CASCADIA 125, DETROIT DIESEL ENGINE, REG. THRU JANUARY 2022, CA LIC. PLATE: 9E99896, VIN: 1FUJGECK79LAG3884, OUT OF SERVICE



2012



2012

VEHICLES & TRAILERS

2006 FORD F-150 PICKUP TRUCK, 2-DOOR, REG. THRU DECEMBER 2019, CA LIC. PLATE: 89095H1, VIN: 1FTRF12296NA39112
1971 CHEVROLET CUSTOM 10 PICKUP TRUCK, MANUAL TRANSMISSION, CA LIC. PLATE: 5U92830, PARTS ONLY
2018 WATER TANK TRAILER W/ PUMP, VIN: 4S9S1UW21JN386234



2006



2018

SCRAP TRAILER

40' HIGH SIDE END DUMP, HYDRAULIC TILT-UP DUMP

PUBLIC ONLINE AUCTION

INSPECT ONSITE AND BID ONLINE

MAJOR METAL RECYCLING & PROCESSING FACILITY

TIMED ONLINE AUCTION: WEDNESDAY, OCTOBER 22 STARTING AT 10:00 AM PDT

INSPECTION: MONDAY, OCTOBER 20 & TUESDAY, OCTOBER 21 FROM 9:00 AM TO 3:00 PM PDT

LOCATION: 10019 SOUTH ALAMEDA STREET, LOS ANGELES, CA 90002

2020



2024



2023



2015



2017



AQUIP WATER FILTRATION TREATMENT SYSTEM

2010 STORMWATERX MODEL 110SBE, 110 GPM TREATMENT PUMP SYSTEM



2010

2020 SENNEBOGEN 830 M E-SERIES & LINK-BELT 240X2MH MATERIAL HANDLERS, 2023 KOMATSU PC240LC-11, 2017 LIEBHERR R936LC, 2013 KOMATSU PC240LC-10 & 2005 CATERPILLAR 320 CLU EXCAVATORS, 2023-2015 GENESIS 665R & 445R MOBILE SHEAR ATTACHMENTS, 2015 HYSTER & MITSUBISHI FORKLIFTS, 2024 CATERPILLAR 262D3 SKID STEER, 2014 KENWORTH & 2012 FREIGHTLINER ROLL OFF TRUCKS, 2012 PETERBILT & 2009 FREIGHTLINER TRUCK TRACTORS, SCRAP TRAILER, PICKUP TRUCKS, ALLIGATOR SHEARS, HARRIS HRB SCRAP BALER, AQUIP WATER FILTRATION TREATMENT SYSTEM, MQ POWER 300 KVA GENERATOR, (60) ROLL OFF BOXES, (40) 45' HIGH CUBE SHIPPING CONTAINERS, SCRAP BINS, (700) CONCRETE BUILDING BLOCKS, FLOOR SCALES, SHOP EQUIPMENT AND RELATED ITEMS

SHIPPING CONTAINERS, ROLL OFF BOXES, BINS & SUPPORT EQUIPMENT

ES 58" MAGNET, S/N 17520
CABLE STRIPPER, MODEL CSX
(2) 4' X 6' DIGITAL FLOOR SCALES
(2) LOADING RAMPS
(60) ROLL OFF BOXES
(40) 45' HIGH CUBE SHIPPING CONTAINERS, 9' HEIGHT
(700) CONCRETE BUILDING BLOCKS
STEEL YARD FLOOR PLATE

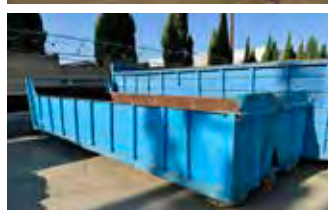


TRUCK SCALE

B-TEK SCALES 70', BRAND NEW



NEVER INSTALLED



2018

RIDE-ON YARD SWEEPERS

2018 TENNANT, S30 SWEEPMAX PLUS, LPG, S/N S30-7667, OUT OF SERVICE

POWERBOSS ARMADILLO, LPG, MODEL 10XT3LP, S/N 19PB1118