

# PUBLIC ONLINE AUCTION

**INSPECT ONSITE AND BID ONLINE**

## SPECIAL EFFECTS MANUFACTURING COMPANY

**TIMED ONLINE AUCTION: TUESDAY, SEPTEMBER 16 STARTING AT 10:00 AM PDT**

**INSPECTION: MONDAY, SEPTEMBER 15 FROM 9:00 AM TO 3:00 PM PDT**

**LOCATION: 7650 GLORIA AVENUE, VAN NUYS, CA 91406**



**SPECIAL EFFECTS & FILM SET EQUIPMENT, MOLE RICHARDSON EQUIPMENT, SHEET METAL & MACHINE SHOP MACHINERY, (6) MILLER WELDERS, KOMATSU FORKLIFT, JLG SCISSOR LIFT, CUSTOM ELECTRIC GOLF CART, (6) STORAGE CONTAINERS, ENCLOSED TRAILERS, PALLET RACKING, MILWAUKEE M18 POWER TOOLS, LISTA CABINETS, WELDING TABLES, METAL MATERIAL AND RELATED ITEMS**



**UNITED**  
**ASSET SALES**  
ROY GAMITYAN, AUCTIONEER

**ROY GAMITYAN, AUCTIONEER**

23945 Calabasas Road, Suite 209, Calabasas, CA 91302

Office 818.264.4232 | [roy@unitedassetsales.com](mailto:roy@unitedassetsales.com)

**WWW.UNITEDASSETSALES.COM**



# PUBLIC ONLINE AUCTION

INSPECT ONSITE AND BID ONLINE

## SPECIAL EFFECTS MANUFACTURING COMPANY

### TIMED ONLINE AUCTION:

TUESDAY, SEPTEMBER 16  
STARTING AT 10:00 AM PDT

### INSPECTION:

MONDAY, SEPTEMBER 15  
FROM 9:00 AM TO 3:00 PM PDT

### INSPECTION LOCATION:

7650 GLORIA AVENUE, VAN NUYS, CA 91406

### TERMS OF PAYMENT:

CASHIER'S CHECK, BUSINESS CHECK WITH BANK  
LETTER OF GUARANTEE, BANK WIRE TRANSFER.  
FULL PAYMENT MUST BE MADE NO LATER  
THAN 24 HOURS OF WINNING BID.

### REMOVAL:

ALL ITEMS MUST BE REMOVED NO LATER  
THAN WEDNESDAY, SEPTEMBER 24. NO EXCEPTIONS.  
PREPPING, REMOVAL, LOADING & TRUCKING  
IS THE RESPONSIBILITY OF THE BUYER

### BUYER'S PREMIUM:

18% FOR ALL PURCHASES

FOR COMPLETE SALE INFO: 818.264.4232  
OR VISIT [WWW.UNITEDASSETSALES.COM](http://WWW.UNITEDASSETSALES.COM)  
EMAIL: [ROY@UNITEDASSETSALES.COM](mailto:ROY@UNITEDASSETSALES.COM)

ONLINE BIDDING PROVIDED BY

**BidSpotter**



**UNITED**  
**ASSET SALES**  
ROY GAMITYAN, AUCTIONEER

**WWW.UNITEDASSETSALES.COM**

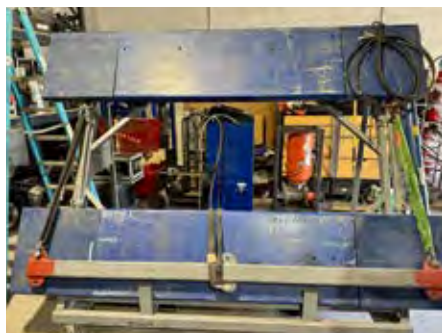
23945 Calabasas Rd., Ste. 209, Calabasas, CA 91302

Office 818.264.4232 | [roy@unitedassetsales.com](mailto:roy@unitedassetsales.com)

**ROY GAMITYAN, AUCTIONEER**  
CA Bond# 63388305





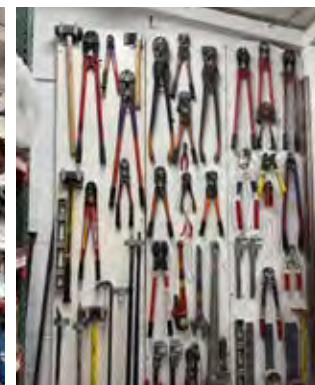
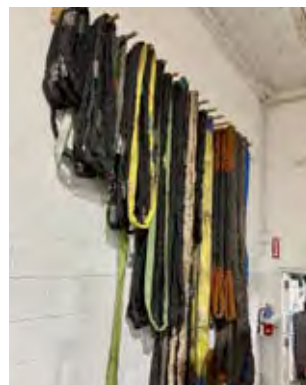


## FEATURING

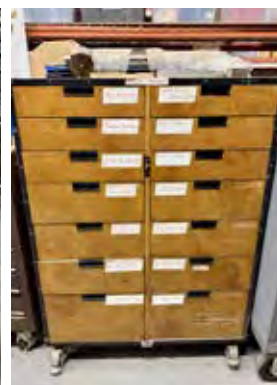
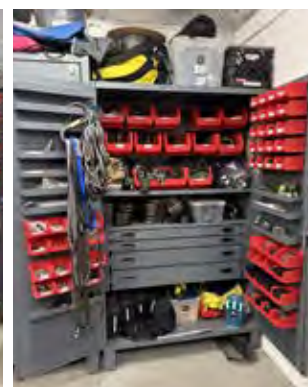
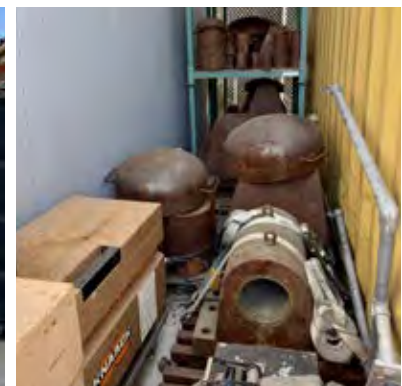
**SPECIAL EFFECTS & FILM SET EQUIPMENT, MOLE RICHARDSON EQUIPMENT, SHEET METAL & MACHINE SHOP MACHINERY, (6) MILLER WELDERS, KOMATSU FORKLIFT, JLG SCISSOR LIFT, CUSTOM ELECTRIC GOLF CART, (6) STORAGE CONTAINERS, ENCLOSED TRAILERS, PALLET RACKING, MILWAUKEE M18 POWER TOOLS, LISTA CABINETS, WELDING TABLES, METAL MATERIAL AND RELATED ITEMS**













# PUBLIC ONLINE AUCTION

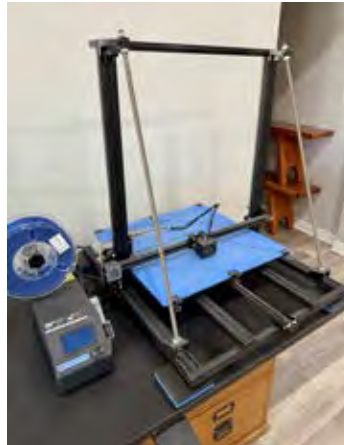
**INSPECT ONSITE AND BID ONLINE**

## SPECIAL EFFECTS MANUFACTURING COMPANY

**TIMED ONLINE AUCTION: TUESDAY, SEPTEMBER 16 STARTING AT 10:00 AM PDT**

**INSPECTION: MONDAY, SEPTEMBER 15 FROM 9:00 AM TO 3:00 PM PDT**

**LOCATION: 7650 GLORIA AVENUE, VAN NUYS, CA 91406**



**FEATURING**

**SPECIAL EFFECTS & FILM SET EQUIPMENT, MOLE RICHARDSON EQUIPMENT, SHEET METAL & MACHINE SHOP MACHINERY, (6) MILLER WELDERS, KOMATSU FORKLIFT, JLG SCISSOR LIFT, CUSTOM ELECTRIC GOLF CART, (6) STORAGE CONTAINERS, ENCLOSED TRAILERS, PALLET RACKING, MILWAUKEE M18 POWER TOOLS, LISTA CABINETS, WELDING TABLES, METAL MATERIAL AND RELATED ITEMS**



**WWW.UNITEDASSETSALES.COM**