

PUBLIC ONLINE AUCTION

INSPECT ONSITE AND BID ONLINE

**SHEET METAL FABRICATION, ASSEMBLY, VEHICLES,
WAREHOUSE, MEZZANINES, METAL MATERIALS**

TIMED ONLINE AUCTION: TUESDAY, JUNE 3 STARTING AT 10:00 AM PDT
INSPECTION: MONDAY, JUNE 2 FROM 9:00 AM TO 3:00 PM PDT
LOCATION: 3100 FUJITA STREET, TORRANCE, CA 90505



**1992 AMADA PEGA 306072 TURRET PUNCH, 1999 ACCUR SHEAR 625010 SHEAR,
ACCURPRESS 7608 PRESS BRAKE, GRINDINGMASTER SANDER, HEM & DOALL
SAWS, DRILL PRESSES, DOWNDRAFT TABLES, MAINTENANCE DEPARTMENT,
ASSEMBLY WORKSTATIONS, VEHICLES AND RELATED ITEMS**



UNITED
ASSET SALES
ROY GAMITYAN, AUCTIONEER

OFFICE 818.264.4232 | ROY@UNITEDASSETSALES.COM

IN CONJUNCTION
WITH:



PERFECTION
Industrial Sales

www.perfectionindustrial.com

WWW.UNITEDASSETSALES.COM

PUBLIC ONLINE AUCTION

INSPECT ONSITE AND BID ONLINE

**SHEET METAL FABRICATION,
ASSEMBLY, VEHICLES, WAREHOUSE,
MEZZANINES, METAL MATERIALS**

TIMED ONLINE AUCTION:

TUESDAY, JUNE 3 STARTING AT 10:00 AM PDT

INSPECTION:

MONDAY, JUNE 2 FROM 9:00 AM TO 3:00 PM PDT

INSPECTION LOCATION:

3100 FUJITA STREET, TORRANCE, CA 90505

TERMS OF PAYMENT:

CASHIER'S CHECK, BUSINESS CHECK WITH BANK LETTER OF GUARANTEE, BANK WIRE TRANSFER. FULL PAYMENT MUST BE MADE NO LATER THAN 24 HOURS OF WINNING BID.

REMOVAL:

ALL ITEMS MUST BE REMOVED NO LATER THAN WEDNESDAY, JUNE 11. NO EXCEPTIONS. PREPPING, REMOVAL, LOADING & TRUCKING IS THE RESPONSIBILITY OF THE BUYER.

BUYER'S PREMIUM:

18% FOR ALL PURCHASES.

FOR COMPLETE SALE INFO: 818.264.4232
OR VISIT WWW.UNITEDASSETSALES.COM
EMAIL: ROY@UNITEDASSETSALES.COM

ONLINE BIDDING PROVIDED BY

BidSpotter



UNITED
ASSET SALES
ROY GAMITYAN, AUCTIONEER

WWW.UNITEDASSETSALES.COM

23945 Calabasas Rd., Ste. 209, Calabasas, CA 91302

Office 818.264.4232 | roy@unitedassetsales.com

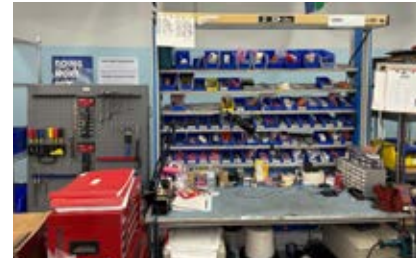
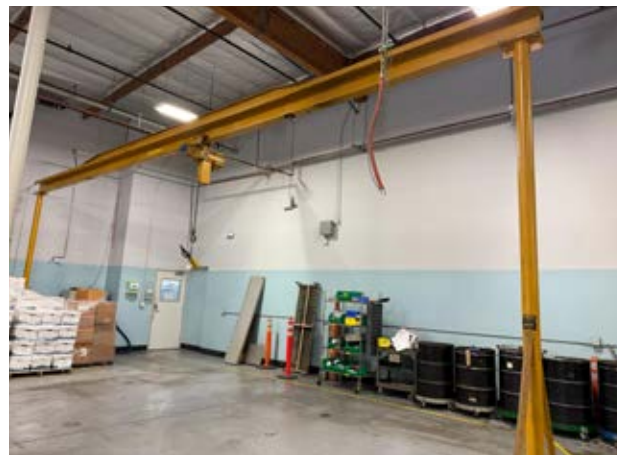
ROY GAMITYAN, AUCTIONEER

CA Bond# 63388305

(2) MEZZANINES

APPROX. 34'W X 36'D X 10'H,
STAIRCASE, 125 LBS/SQ FT
LOAD RATING

APPROX. 40'W X 20'D, 13'W
X 10'D L-SHAPED, 12'H,
STAIRCASE, 125 LBS/SQ FT
LOAD RATING



TURRET PUNCH

1992 AMADA PEGA 306072, AMADAN-04P-C CNC CONTROL, 30 TON CAPACITY, 58 STATION THICK TURRET, 30 RPM, BALL TRANSFER TABLE, S/N AE 670033

30 TON



SHOP SUPPORT MACHINERY

GRINDINGMASTER 2000 WIDE BELT SANDER, 37" BELT, TYPE MSF-900, S/N TM 161937

HEM H 90 A-4 HORIZONTAL BAND SAW, AUTO CLAMPING & SHUTTLE, 12.75" X 12.75" CAPACITY, 3 HP, S/N 1134712

BOSCHERT PN4 CORNER NOTCHER, 8-7/8" X 8-7/8" X 5/32" CAPACITY, S/N 359

DOALL 12A ABRASIVE CUT-OFF SAW, S/N 1362-7

DOALL 2013-V VERTICAL BAND SAW, 20" THROAT, 30" X 30" TABLE, S/N 500-94707

DONALDSON TORIT 20-5 CYCLONE DUST COLLECTOR, 5 HP, 3600 RPM, S/N IG389121

(4) MEDIA BLAST & ABRASIVES PC42-3 DOWNDRAFT TABLES, 45" X 22" WORK AREA, BACK & OVERHEAD LIGHT

PETERSON 16" PANEL SAW

DELTA 10" TABLE SAW

KALAMAZOO 10" CUT-OFF SAW, 3 HP

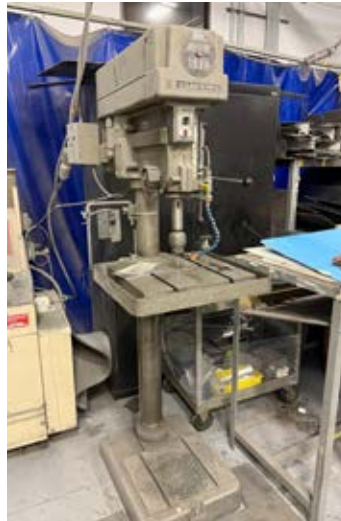
CLAUSING 22S DRILL PRESS, 20", FLOOR TYPE

BALDOR BELT SANDERS

STRIPPIT PUNCH & DIE GRINDER

SHEAR

1999 ACCUR SHEAR 625010, 10' X .250" CAPACITY, ACCUR SHEAR SC2 BACK GAUGE, 6' SQUARING ARM, SHEET SUPPORTS, S/N 625010



PRESS PRAKE

ACCURPRESS 7608, 8' X 60 TON, AUTO BACK GAGE, S/N 760



PUBLIC ONLINE AUCTION

INSPECT ONSITE AND BID ONLINE

SHEET METAL FABRICATION, ASSEMBLY, VEHICLES, WAREHOUSE, MEZZANINES, METAL MATERIALS

TIMED ONLINE AUCTION: TUESDAY, JUNE 3 STARTING AT 10:00 AM PDT
INSPECTION: MONDAY, JUNE 2 FROM 9:00 AM TO 3:00 PM PDT
LOCATION: 3100 FUJITA STREET, TORRANCE, CA 90505



1992 AMADA PEGA 306072 TURRET PUNCH, 1999 ACCURSHEAR 625010 SHEAR, ACCURPRESS 7608 PRESS BRAKE, GRINDINGMASTER SANDER, HEM & DOALL SAWS, DRILL PRESSES, DOWNDRAFT TABLES, MAINTENANCE DEPARTMENT, ASSEMBLY WORKSTATIONS, VEHICLES AND RELATED ITEMS

VEHICLES

2015 FORD F-350 SUPER DUTY STAKEBED TRUCK, LIFT GATE, CA LIC PLATE: 95321U3, VIN: 1FDRF3G64FEB37287

2010 HONDA ACCORD LX SEDAN, 4-DOOR, 2.4L I4 DOHC, AUTOMATIC TRANSMISSION, APPROX. 58,506 MILES, CA LIC PLATE: 6NTE885, VIN: 1HGCP2F33AA190377

2010 HONDA ACCORD LX SEDAN, 4-DOOR, 2.4L I4 DOHC, AUTOMATIC TRANSMISSION, APPROX. 71,639 MILES, CA LIC PLATE: 6NTE886, VIN: 1HGCP2F39AA188309

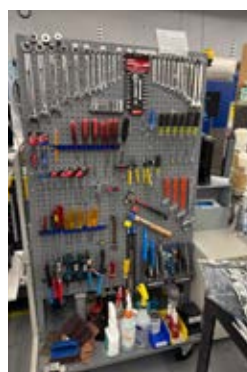
2015



2010

SCISSOR LIFT

SKYJACK SJM-3219, ELECTRIC, 500 LB CAPACITY, S/N 22385



2010

