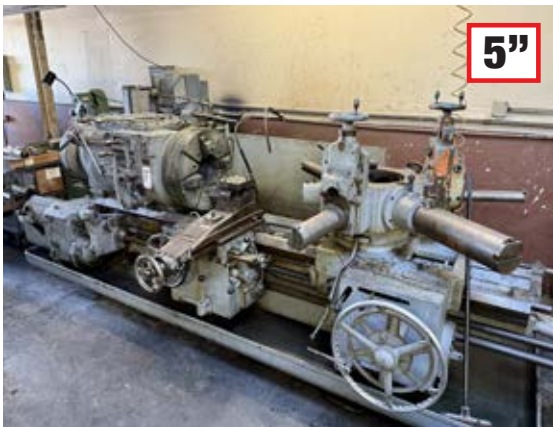


PUBLIC ONLINE AUCTION

INSPECT ONSITE AND BID ONLINE

MACHINE SHOP, VEHICLES, FORKLIFT & TRAILER

TIMED ONLINE AUCTION: TUESDAY, FEBRUARY 11 STARTING AT 10:00 AM PST
INSPECTION: MONDAY, FEBRUARY 10 FROM 9:00 AM TO 3:00 PM PST
LOCATION: 8298 ALLPORT AVENUE, SANTA FE SPRINGS, CA 90670



(11) WARNER & SWASEY/JONES & LAMSON TURRET LATHES, (4) AXELSON LATHES, BULLARD VERTICAL TURRET LATHE, LAGUN VERTICAL MILL, SAWS, AIR COMPRESSORS, LASER ENGRAVING MACHINE, TOOLING, INSPECTION TOOLS, WORKBENCHES, 2003 MERCEDES-BENZ, 2007 PONTIAC SOLSTICE, UTILITY TRAILER, FORKLIFT AND RELATED ITEMS



UNITED
ASSET SALES
ROY GAMITYAN, AUCTIONEER

ROY GAMITYAN, AUCTIONEER

23945 Calabasas Road, Suite 209, Calabasas, CA 91302
Office 818.264.4232 | roy@unitedassetsales.com

WWW.UNITEDASSETSALES.COM

PUBLIC ONLINE AUCTION

INSPECT ONSITE AND BID ONLINE

MACHINE SHOP, VEHICLES, FORKLIFT & TRAILER

TIMED ONLINE AUCTION:

TUESDAY, FEBRUARY 11 STARTING AT 10:00 AM PST

INSPECTION:

MONDAY, FEBRUARY 10 FROM 9:00 AM TO 3:00 PM PST

INSPECTION LOCATION:

8298 ALLPORT AVENUE
SANTA FE SPRINGS, CA 90670

TERMS OF PAYMENT:

CASHIER'S CHECK, BUSINESS CHECK WITH BANK LETTER OF GUARANTEE, BANK WIRE TRANSFER. FULL PAYMENT MUST BE MADE NO LATER THAN 24 HOURS OF WINNING BID.

REMOVAL:

ALL ITEMS MUST BE REMOVED NO LATER THAN TUESDAY, FEBRUARY 18. NO EXCEPTIONS. PREPPING, REMOVAL, LOADING & TRUCKING IS THE RESPONSIBILITY OF THE BUYER

BUYER'S PREMIUM:

18% FOR ALL PURCHASES

FOR COMPLETE SALE INFO: 818.264.4232
OR VISIT WWW.UNITEDASSETSALES.COM
EMAIL: ROY@UNITEDASSETSALES.COM

ONLINE BIDDING PROVIDED BY

BidSpotter



UNITED
ASSET SALES
ROY GAMITYAN, AUCTIONEER

WWW.UNITEDASSETSALES.COM

23945 Calabasas Rd., Ste. 209, Calabasas, CA 91302

Office 818.264.4232 | roy@unitedassetsales.com

ROY GAMITYAN, AUCTIONEER
CA Bond# 63388305

ENGINE LATHES

AXELSON 20" X 96", 16" 3-JAW CHUCK, TAILSTOCK, 12' BED, S/N 4977

AXELSON 20" X 72", 12" 3-JAW CHUCK, TAILSTOCK, 10' BED, S/N 4568

AXELSON 16" X 54", 9" 3-JAW CHUCK, TAILSTOCK, 8' BED, S/N 4945

AXELSON 20" X 48", 15" 3-JAW CHUCK, TAILSTOCK, 8' BED, S/N 4062



SHOP SUPPORT

LAGUN FT1 VERTICAL MILL, 9" X 42" TABLE, POWER FEED, ANILAM MINIWIZARD 102-2 DRO, S/N SE-11092

SUNNEN MBB-1660 PRECISION HONING MACHINE, S/N 91118, W/ MANDRELS, STONE SETS, ETC.

CAROLINA TOOL & EQUIPMENT HORIZONTAL BAND SAW, MODEL HD10, S/N HD1023857, W/ (3) NEW BLADES

BALDOR 6" CARBIDE TOOL GRINDER, CAT. NO. 500, 1/2 HP, 3600 RPM, 115V, SINGLE PHASE, W/ PEDESTAL

BALDOR 7" INDUSTRIAL PEDESTAL GRINDER, 1/2 HP, 115V, SINGLE PHASE, 3600 RPM, W/ PEDESTAL

DOUBLE END PEDESTAL GRINDER, DATA TAG UNREADABLE

FAIRBANKS PORTABLE MECHANICAL PLATFORM SCALE, 16" X 26" PLATFORM

BALDOR 1/2 HP DIRECT CURRENT ELECTRIC MOTOR, CAT. NO. CD3450, 1750 RPM

PEDAL LIFT CART, 20-1/2" X 40"

LANDWORKS ELECTRIC POWER CART, DC48V, 500W, 500 LB LOAD CAPACITY, 3.1 MPH MAX FORWARD SPEED, 2.2 MPH MAX REVERSE SPEED, PNEUMATIC TIRES, 23" X 34" PAYLOAD AREA

SUPER HANDY ELECTRIC TRAILER DOLLY, 24VDC, 800W, 2800 LB MAX TRAILER WEIGHT, 450 LB MAX TORQUE WEIGHT

CAROLINA ENGINE HOIST/CHERRY PICKER

INGERSOLL RAND 1-1/2 TON MANUAL CHAIN HOIST, SILVER SERIES

TAPER DRILLS, STRAIGHT SHANK DRILLS, TAPS, TAP EXTENSIONS, LATHE INSERT AND CUT-OFF TOOLS, BORING BARS, ETC.



VERTICAL TURRET LATHE

BULLARD, 42" 4-JAW CHUCK, 5-STATION TURRET, DAYTON SCR CONTROL, S/N 21531





9"

TURRET LATHES

WARNER & SWASEY 4A M-1500, 9" HOLE THRU SPINDLE, 24" 4-JAW CHUCK, (6) FLANGED TOOL HOLDERS, RAPID REVERSE, S/N 466761

WARNER & SWASEY 4A M-1500, 9" HOLE THRU SPINDLE, 24" 4-JAW CHUCK, (6) FLANGED TOOL HOLDERS, S/N 922505W

WARNER & SWASEY 3A M-3500, 5" HOLE THRU SPINDLE, 20" 3-JAW CHUCK, (6) FLANGED TOOL HOLDERS, S/N 1593500

WARNER & SWASEY 2A M-510, 5" HOLE THRU SPINDLE, 15" 3-JAW CHUCK, (6) FLANGED TOOL HOLDERS, S/N 1273585

WARNER & SWASEY 2A M-3470, 5" HOLE THRU SPINDLE, 18" 3-JAW CHUCK, (6) FLANGED TOOL HOLDERS, S/N 2294355

WARNER & SWASEY 2A, 4" HOLE THRU SPINDLE, 15" 3-JAW CHUCK, (6) FLANGED TOOL HOLDERS, S/N 2089777

WARNER & SWASEY 2A M-3470, 5" HOLE THRU SPINDLE, 15" 3-JAW CHUCK, (6) FLANGED TOOL HOLDERS, S/N 2028714

WARNER & SWASEY 1A M-3400, 3" HOLE THRU SPINDLE, 15" 3-JAW CHUCK, (6) FLANGED TOOL HOLDERS, S/N 2417378

JONES & LAMSON NO. 5 UNIVERSAL, 12" 3-JAW CHUCK, 6-STATION TURRET, S/N 16954

JONES & LAMSON NO. 5 UNIVERSAL, 12" 3-JAW CHUCK, 6-STATION TURRET, S/N NOT LEGIBLE



9"



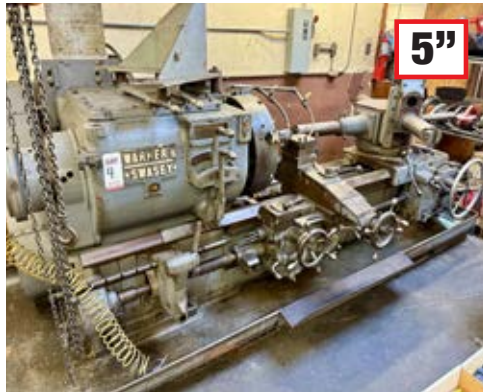
5"



5"



3"



5"



5"

LASER ENGRAVING MACHINE

UNBRANDED LASER ENGRAVING MACHINE, MODEL SH-G570, W/ CW-5000 INDUSTRIAL CHILLER



PUBLIC ONLINE AUCTION

INSPECT ONSITE AND BID ONLINE

MACHINE SHOP, VEHICLES, FORKLIFT & TRAILER

TIMED ONLINE AUCTION: TUESDAY, FEBRUARY 11 STARTING AT 10:00 AM PST
INSPECTION: MONDAY, FEBRUARY 10 FROM 9:00 AM TO 3:00 PM PST
LOCATION: 8298 ALLPORT AVENUE, SANTA FE SPRINGS, CA 90670



FORKLIFT

CLARK, 3000 LB CAPACITY, GAS OPERATED,
S/N CFY30B 52-676-565



VEHICLES / TRAILER

2003 MERCEDES-BENZ S-CLASS
S 55 AMG KOMPRESSOR, V8,
SUPERCHARGED, CLEAN TITLE,
TAGS CURRENT, NEEDS SMOG

2007 PONTIAC SOLSTICE, CLEAN
TITLE, TAGS CURRENT, NEEDS SMOG
UTILITY TRAILER, 14' X 5'



TRANSFORMERS

POWERFORMER DRY TYPE, HI
VOLTAGE: 480, LOW VOLTAGE:
240/120, 45 KVA, 3-PHASE,
60 HZ, CAT. NO. 223-3217-
120, S/N A8511

CRITTENDEN, PRIMARY VOLTS:
480, SECONDARY VOLTS: 240,
45 KVA, 3-PHASE, 60 HZ,
STYLE 15011, S/N U7148

SQUARE D, 30 KVA, HIGH
VOLTAGE: 480V, LOW VOLTAGE:
240V, 60 HZ, 3-PHASE, CAT.
NO. 30T6H

FEDERAL PACIFIC, 45 KVA,
PRIMARY VOLTAGE: 480V,
SECONDARY VOLTAGE:
240/120LT, 3-PHASE, 60 HZ,
CAT. NO. T43T45E

FLOOR TYPE JIB CRANES

9' REACH, 2-TON MANUAL CHAIN HOIST,
11-1/2' OVERALL HEIGHT

13' REACH, 1-TON MANUAL CHAIN HOIST,
11-1/2' OVERALL HEIGHT