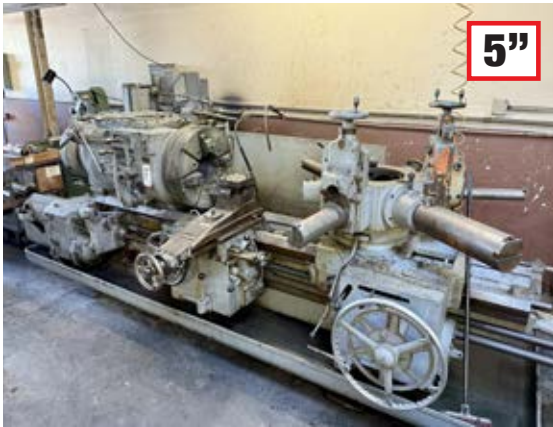


# PUBLIC ONLINE AUCTION

INSPECT ONSITE AND BID ONLINE

## MACHINE SHOP, VEHICLES & FORKLIFT

**TIMED ONLINE AUCTION: TUESDAY, FEBRUARY 11 STARTING AT 10:00 AM PST**  
**INSPECTION: MONDAY, FEBRUARY 10 FROM 9:00 AM TO 3:00 PM PST**  
**LOCATION: 8298 ALLPORT AVENUE, SANTA FE SPRINGS, CA 90670**



**(11) WARNER & SWASEY/JONES & LAMSON TURRET LATHES, (4) AXELSON LATHES, BULLARD VERTICAL TURRET LATHE, LAGUN VERTICAL MILL, SAWS, AIR COMPRESSORS, LASER ENGRAVING MACHINE, TOOLING, INSPECTION TOOLS, WORKBENCHES, 2003 MERCEDES-BENZ, 2007 PONTIAC SOLSTICE, FORKLIFT AND RELATED ITEMS**



**UNITED**  
**ASSET SALES**  
ROY GAMITYAN, AUCTIONEER

**ROY GAMITYAN, AUCTIONEER**  
23945 Calabasas Road, Suite 209, Calabasas, CA 91302  
Office 818.264.4232 | roy@unitedassetsales.com

**WWW.UNITEDASSETSALES.COM**

# PUBLIC ONLINE AUCTION

INSPECT ONSITE AND BID ONLINE

## MACHINE SHOP, VEHICLES & FORKLIFT

### TIMED ONLINE AUCTION:

TUESDAY, FEBRUARY 11 STARTING AT 10:00 AM PST

### INSPECTION:

MONDAY, FEBRUARY 10 FROM 9:00 AM TO 3:00 PM PST

### INSPECTION LOCATION:

8298 ALLPORT AVENUE  
SANTA FE SPRINGS, CA 90670

### TERMS OF PAYMENT:

CASHIER'S CHECK, BUSINESS CHECK WITH BANK LETTER OF GUARANTEE, BANK WIRE TRANSFER. FULL PAYMENT MUST BE MADE NO LATER THAN 24 HOURS OF WINNING BID.

### REMOVAL:

ALL ITEMS MUST BE REMOVED NO LATER THAN TUESDAY, FEBRUARY 18. NO EXCEPTIONS. PREPPING, REMOVAL, LOADING & TRUCKING IS THE RESPONSIBILITY OF THE BUYER

### BUYER'S PREMIUM:

18% FOR ALL PURCHASES

FOR COMPLETE SALE INFO: 818.264.4232  
OR VISIT [WWW.UNITEDASSETSALES.COM](http://WWW.UNITEDASSETSALES.COM)  
EMAIL: [ROY@UNITEDASSETSALES.COM](mailto:ROY@UNITEDASSETSALES.COM)

ONLINE BIDDING PROVIDED BY

**BidSpotter**



**UNITED**  
ASSET SALES  
ROY GAMITYAN, AUCTIONEER

[WWW.UNITEDASSETSALES.COM](http://WWW.UNITEDASSETSALES.COM)

23945 Calabasas Rd., Ste. 209, Calabasas, CA 91302

Office 818.264.4232 | [roy@unitedassetsales.com](mailto:roy@unitedassetsales.com)

ROY GAMITYAN, AUCTIONEER  
CA Bond# 63388305

## ENGINE LATHES

AXELSON 20" X 96", 16" 3-JAW CHUCK, TAILSTOCK, 12' BED, S/N 4977

AXELSON 20" X 72", 12" 3-JAW CHUCK, TAILSTOCK, 10' BED, S/N 4568

AXELSON 16" X 54", 9" 3-JAW CHUCK, TAILSTOCK, 8' BED, S/N 4945

AXELSON 20" X 48", 15" 3-JAW CHUCK, TAILSTOCK, 8' BED, S/N 4062



## SHOP SUPPORT

LAGUN FT1 VERTICAL MILL, 9" X 42" TABLE, POWER FEED, ANILAM MINIWIZARD 102-2 DRO, S/N SE-11092

SUNNEN MBB-1660 PRECISION HONING MACHINE, S/N 91118, W/ MANDRELS, STONE SETS, ETC.

CAROLINA TOOL & EQUIPMENT HORIZONTAL BAND SAW, MODEL HD10, S/N HD1023857, W/ (3) NEW BLADES

BALDOR 6" CARBIDE TOOL GRINDER, CAT. NO. 500, 1/2 HP, 3600 RPM, 115V, SINGLE PHASE, W/ PEDESTAL

BALDOR 7" INDUSTRIAL PEDESTAL GRINDER, 1/2 HP, 115V, SINGLE PHASE, 3600 RPM, W/ PEDESTAL

DOUBLE END PEDESTAL GRINDER, DATA TAG UNREADABLE

FAIRBANKS PORTABLE MECHANICAL PLATFORM SCALE, 16" X 26" PLATFORM

BALDOR 1/2 HP DIRECT CURRENT ELECTRIC MOTOR, CAT. NO. CD3450, 1750 RPM

PEDAL LIFT CART, 20-1/2" X 40"

LANDWORKS ELECTRIC POWER CART, DC48V, 500W, 500 LB LOAD CAPACITY, 3.1 MPH MAX FORWARD SPEED, 2.2 MPH MAX REVERSE SPEED, PNEUMATIC TIRES, 23" X 34" PAYLOAD AREA

SUPER HANDY ELECTRIC TRAILER DOLLY, 24VDC, 800W, 2800 LB MAX TRAILER WEIGHT, 450 LB MAX TORQUE WEIGHT

CAROLINA ENGINE HOIST/CHERRY PICKER

INGERSOLL RAND 1-1/2 TON MANUAL CHAIN HOIST, SILVER SERIES

TAPER DRILLS, STRAIGHT SHANK DRILLS, TAPS, TAP EXTENSIONS, LATHE INSERT AND CUT-OFF TOOLS, BORING BARS, ETC.



## VERTICAL TURRET LATHE

BULLARD, 42" 4-JAW CHUCK, 5-STATION TURRET, DAYTON SCR CONTROL, S/N 21531





9"

## TURRET LATHES

**WARNER & SWASEY 4A M-1500, 9" HOLE THRU SPINDLE, 24" 4-JAW CHUCK, (6) FLANGED TOOL HOLDERS, RAPID REVERSE, S/N 466761**

**WARNER & SWASEY 4A M-1500, 9" HOLE THRU SPINDLE, 24" 4-JAW CHUCK, (6) FLANGED TOOL HOLDERS, S/N 922505W**

**WARNER & SWASEY 3A M-3500, 5" HOLE THRU SPINDLE, 20" 3-JAW CHUCK, (6) FLANGED TOOL HOLDERS, S/N 1593500**

**WARNER & SWASEY 2A M-510, 5" HOLE THRU SPINDLE, 15" 3-JAW CHUCK, (6) FLANGED TOOL HOLDERS, S/N 1273585**

**WARNER & SWASEY 2A M-3470, 5" HOLE THRU SPINDLE, 18" 3-JAW CHUCK, (6) FLANGED TOOL HOLDERS, S/N 2294355**

**WARNER & SWASEY 2A, 4" HOLE THRU SPINDLE, 15" 3-JAW CHUCK, (6) FLANGED TOOL HOLDERS, S/N 2089777**

**WARNER & SWASEY 2A M-3470, 5" HOLE THRU SPINDLE, 15" 3-JAW CHUCK, (6) FLANGED TOOL HOLDERS, S/N 2028714**

**WARNER & SWASEY 1A M-3400, 3" HOLE THRU SPINDLE, 15" 3-JAW CHUCK, (6) FLANGED TOOL HOLDERS, S/N 2417378**

**JONES & LAMSON NO. 5 UNIVERSAL, 12" 3-JAW CHUCK, 6-STATION TURRET, S/N 16954**

**JONES & LAMSON NO. 5 UNIVERSAL, 12" 3-JAW CHUCK, 6-STATION TURRET, S/N NOT LEGIBLE**



9"



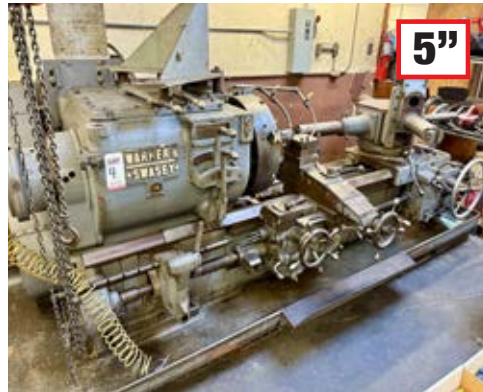
5"



5"



3"



5"



5"

## LASER ENGRAVING MACHINE

**UNBRANDED LASER ENGRAVING MACHINE, MODEL SH-G570, W/ CW-5000 INDUSTRIAL CHILLER**



# PUBLIC ONLINE AUCTION

INSPECT ONSITE AND BID ONLINE

## MACHINE SHOP, VEHICLES & FORKLIFT

**TIMED ONLINE AUCTION: TUESDAY, FEBRUARY 11 STARTING AT 10:00 AM PST**

**INSPECTION: MONDAY, FEBRUARY 10 FROM 9:00 AM TO 3:00 PM PST**

**LOCATION: 8298 ALLPORT AVENUE, SANTA FE SPRINGS, CA 90670**



### FORKLIFT

**CLARK, 3000 LB CAPACITY, GAS OPERATED,  
S/N CFY30B 52-676-565**



### VEHICLES

**2003 MERCEDES-BENZ S-CLASS  
S 55 AMG KOMPRESSOR, V8,  
SUPERCHARGED, CLEAN TITLE,  
TAGS CURRENT, NEEDS SMOG**

**2007 PONTIAC SOLSTICE, CLEAN  
TITLE, TAGS CURRENT,  
NEEDS SMOG**



### FLOOR TYPE JIB CRANES

**9' REACH, 2-TON MANUAL CHAIN HOIST,  
11-1/2' OVERALL HEIGHT**

**13' REACH, 1-TON MANUAL CHAIN HOIST,  
11-1/2' OVERALL HEIGHT**



### TRANSFORMERS

**POWERFORMER DRY TYPE, HI  
VOLTAGE: 480, LOW VOLTAGE:  
240/120, 45 KVA, 3-PHASE,  
60 HZ, CAT. NO. 223-3217-  
120, S/N A8511**

**CRITTENDEN, PRIMARY VOLTS:  
480, SECONDARY VOLTS: 240,  
45 KVA, 3-PHASE, 60 HZ,  
STYLE 15011, S/N U7148**

**SQUARE D, 30 KVA, HIGH  
VOLTAGE: 480V, LOW VOLTAGE:  
240V, 60 HZ, 3-PHASE, CAT.  
NO. 30T6H**

**FEDERAL PACIFIC, 45 KVA,  
PRIMARY VOLTAGE: 480V,  
SECONDARY VOLTAGE:  
240/120LT, 3-PHASE, 60 HZ,  
CAT. NO. T43T45E**

