

PUBLIC ONLINE AUCTION

INSPECT ONSITE AND BID ONLINE

ALUMINUM ALLOY CASTING FOUNDRY

TIMED ONLINE AUCTION: TUESDAY, DECEMBER 10 STARTING AT 10:00 AM MST

INSPECTION: MONDAY, DECEMBER 9 FROM 9:00 AM TO 3:00 PM MST

LOCATION: 12246 NORTH RUSSELL ROAD, MARICOPA, AZ 85138



AJAX INDUCTION FURNACE, THERMTRONIX GAS FIRED TILTING FURNACES, CORE MACHINES, GREEN SAND SUPPLY SYSTEM, GENERAL KINEMATICS VIBRA-MILL SAND RECLAIMER, DEPENDABLE SHELL CORE MACHINES, BMM JOLT SQUEEZE PIN LIFT MOLDING MACHINES, PALMER MIXERS, MOLDING SQUEEZERS, MACHINE SHOP, STAKEBED TRUCK, FORKLIFTS, SKID STEER LOADER, SCISSOR LIFT, AIR COMPRESSORS AND RELATED ITEMS



UNITED
ASSET SALES
ROY GAMITYAN, AUCTIONEER

OFFICE 818.264.4232 | ROY@UNITEDASSETSALES.COM

IN CONJUNCTION
WITH:



WORLD EQUIPMENT & MACHINE SALES COMPANY
4550 DARROW RD, STOW, OHIO 44224

WWW.UNITEDASSETSALES.COM

PUBLIC ONLINE AUCTION

INSPECT ONSITE AND BID ONLINE

ALUMINUM ALLOY CASTING FOUNDRY

TIMED ONLINE AUCTION:

TUESDAY, DECEMBER 10 STARTING AT 10:00 AM MST

INSPECTION:

MONDAY, DECEMBER 9 FROM 9:00 AM TO 3:00 PM MST

INSPECTION LOCATION:

12246 NORTH RUSSELL ROAD, MARICOPA, AZ 85138

TERMS OF PAYMENT:

CASHIER'S CHECK, BUSINESS CHECK WITH BANK LETTER OF GUARANTEE, BANK WIRE TRANSFER. FULL PAYMENT MUST BE MADE NO LATER THAN 24 HOURS OF WINNING BID.

REMOVAL:

ALL ITEMS MUST BE REMOVED NO LATER THAN FRIDAY, DECEMBER 20. NO EXCEPTIONS. PREPPING, REMOVAL, LOADING & TRUCKING IS THE RESPONSIBILITY OF THE BUYER.

BUYER'S PREMIUM:

18% FOR ALL PURCHASES.

FOR COMPLETE SALE INFO: 818.264.4232
OR VISIT WWW.UNITEDASSETSALES.COM
EMAIL: ROY@UNITEDASSETSALES.COM

ONLINE BIDDING PROVIDED BY

BidSpotter



UNITED
ASSET SALES
ROY GAMITYAN, AUCTIONEER

WWW.UNITEDASSETSALES.COM

23945 Calabasas Rd., Ste. 209, Calabasas, CA 91302
Office 818.264.4232 | roy@unitedassetsales.com

ROY GAMITYAN, AUCTIONEER
CA Bond# 63388305

MACHINE SHOP EQUIPMENT

BRIDGEPORT VERTICAL MILL, POWER FEED, DRO
DOALL VERTICAL BAND SAW, MODEL ZS-3620,
S/N 264-90382

GP SWING FRAME SANDER

(3) MILLER WELDERS, MODELS SYNCROWAVE 350LX,
ALUMAPOWER 450 MPA AND 330ST AIRCRAFTER

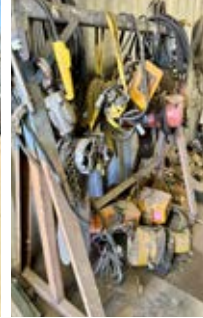
GROB TABLE CUT OFF SAW, 24" X 24" TABLE

DOALL HORIZONTAL BAND SAW,
MODEL 264-90382, 230V/3/60

HAMMOND DOUBLE END POLISHER

TABOR CUT OFF SAW

DAKE H-FRAME PRESS



MACHINERY-OUTSIDE STORAGE

UNIVERSAL SAND BUCKET ELEVATOR

DEPENDABLE SHELL CORE MACHINE, MODEL 200

OSBORN ROTA-LIFT MACHINE, MODEL 3161

FOX TABLE CUT OFF SAW

PANGBORN SAND BLAST BOOTH

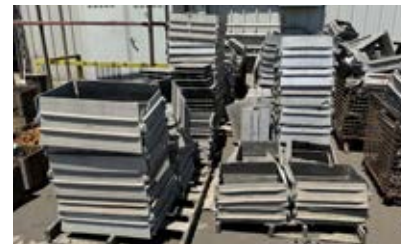
VIKING SAND BLAST BOOTH

MODERN GEARED LIP POUR LADLE, 36" X 36"

MODERN GEARED LIP POUR LADLE, 24" X 24"

MODERN GEARED LIP POUR LADLE, 24" X 26"

COLD BOX CORE MAKING MACHINE, WITH CONTROL PANEL



AIR COMPRESSORS

2013 ATLAS COPCO, GA75, TANK, 100 HP
GARDNER DENVER ELECTRA SAVER II, TANK



FOUNDRY MACHINERY AND EQUIPMENT

1992 INDUCTOTHERM INDUCTION FURNACE, VIP POWER TRAK 225-30, 225 KW, 3200 HZ, 1000 LB HYDRAULIC TILTING FURNACE, 300 LB LIFT SWING FURNACE

CLOSED TYPE WATER COOLING SYSTEM, WATER PUMPS, TOWER

(2) MODERN FA POURING DEVICES, WITH LADLE

AAF PULSE TYPE DUST COLLECTOR, 6 PULSES

SWECO 36" DIAMETER SCREEN

AIM HEAT TREAT FURNACE

GRIEVE OVEN, SPECIAL WALK IN, 250 DEGREE, 18 KW, 480V, S/N 14605

SOUTHWESTERN SYSTEMS HEAT TREAT FURNACE

WHEELABRATOR TUMBLAST, 5 CU. FT, RUBBER LINED, S/N A131236

WHEELABRATOR TUMBLAST, 5 CU. FT, DIRECT DRIVE WHEEL, RUBBER LINED

OVERHEAD SAND DISTRIBUTION BELT, 9 STATIONS, WITH MOLDER HOPPER, PLOWS

PEKAY AERATOR, FITS 20" BELT

OSBORN ROTA-LIFT MACHINE, MODEL 3161-12, WITH HANDLER

(2) INTERNATIONAL MOLDING SQUEEZERS, 12"

BMM MOLDING SQUEEZER, MODEL QCK

SPO MOLDING SQUEEZER, MODEL 114JU, 14"

KLOSTER NO BAKE SYSTEM, TYPE III, S/N MS7314, WITH CEL-600# PER MINUTE MIXER PALMER ELECTRIC SAND HEATER, NEW 2013, SAND STORAGE SILO VIBRATING COMPACTION TABLE, 5' X 6'

PALMER M-200, MIXER, 200# PER MINUTE, 3 PART PUMPS, EXTENDED REACH, CONTROL PANEL, S/N U282

SCHAEFER ELECTRIC HYDRAULIC TILTING FURNACE, 1000 LB, WITH HYDRAULIC PUMP

THERMTRONIX GAS FIRED TILTING FURNACE, MODEL GT-2000, 2000 LB, CONTROLS, HYDRAULIC TILTING, S/N 001595

(2) THERMTRONIX GAS FIRED FURNACES, DIP OUT, MODEL GS-900, 900 LB, WITH CONTROL PANEL, S/N'S 091974, 122035R

OMCO SUPER BOWL MS-1, WITH (3) PALMER PUMPS, 100 LB

BEARDSLEY & PIPER MULBARO SAND MULLER, WITH TOP AND BOTTOM

(3) DEPENDABLE SHELL CORE MACHINES, GAS, MODEL 100S

DEPENDABLE SHELL CORE MACHINE, LATE MODEL, GAS, 400-FA, WITH PLC CONTROLS, HYDRAULIC PUMP, S/N 150

BEARDSLEY AND PIPER SHELL CORE, GAS, MODEL SF-6



GREEN SAND SUPPLY SYSTEM

EVEN FLOW SAND BIN, WITH BELT, INCLINED 20" BELT TO SAND SCREEN SIMPLICITY - TEREX SAND SCREEN, 2 DECKS, S/N 248-M110BS-7062, INCLINED 20" BELT TO BUCKET ELEVATOR, BUCKET ELEVATOR, NEW SAND STORAGE SILO, APPROX 40T, INCLINED SAND BELT 20" TO MULLERS, SIMPSON 3F SAND MULLER, SIMPSON 2F SAND MULLER, INCLINED 24" BELT TO OVERHEAD SAND SYSTEM

GENERAL KINEMATICS VIBRA-MILL SAND RECLAIMER, MODEL VM-25, UP TO 5 TONS PER HOUR, S/N 3148-1

DEPENDABLE FORDATH PNEUMATIC SAND TRANSPORTER, SAND STORAGE SILO, DUST COLLECTOR

(2) BMM JOLT SQUEEZE PIN LIFT MOLDING MACHINES, MODEL. QCT-2

HERSCHAL CORE KNOCKOUT MACHINE

SIMPSON 2F MULLER PARTS, WHEEL AND GEAR BOX

STEEL & ALUMINUM FLASKS, DUMP HOPPERS, SUPPLIES AND RELATED ITEMS



PUBLIC ONLINE AUCTION

INSPECT ONSITE AND BID ONLINE

ALUMINUM ALLOY CASTING FOUNDRY

TIMED ONLINE AUCTION: TUESDAY, DECEMBER 10 STARTING AT 10:00 AM MST

INSPECTION: MONDAY, DECEMBER 9 FROM 9:00 AM TO 3:00 PM MST

LOCATION: 12246 NORTH RUSSELL ROAD, MARICOPA, AZ 85138



STAKEBED TRUCK

2008 GMC SIERRA 3500HD, DIESEL ENGINE, ALLISON DURMAX TRANSMISSION, AUTOMATIC TRANSMISSION, DIAMOND PLATE BED, DUAL REAR WHEELS



2008

AJAX INDUCTION FURNACE, THERMTRONIX GAS FIRED TILTING FURNACES, CORE MACHINES, GREEN SAND SUPPLY SYSTEM, GENERAL KINEMATICS VIBRA-MILL SAND RECLAIMER, DEPENDABLE SHELL CORE MACHINES, BMM JOLT SQUEEZE PIN LIFT MOLDING MACHINES, PALMER MIXERS, MOLDING SQUEEZERS, MACHINE SHOP, STAKEBED TRUCK, FORKLIFTS, SKID STEER LOADER, SCISSOR LIFT, AIR COMPRESSORS AND RELATED ITEMS

FORKLIFTS

TAILIFT, MODEL FD 35, 7500 LB CAPACITY, DIESEL
TAILIFT, MODEL FD 35, 5000 LB CAPACITY, DIESEL
NISSAN, 3000 LB CAPACITY, PROPANE
YALE, 3000 LB, PROPANE



SCISSOR LIFT

GENIE MANLIFT, MODEL GS-1930, ELECTRIC



7,500 LB CAPACITY