

PUBLIC ONLINE AUCTION

INSPECT ONSITE AND BID ONLINE

NORTHWEST MACHINE

ONLINE AUCTION CLOSES: TUESDAY, MAY 2 STARTING AT 11:00 AM MDT

INSPECTION: MONDAY, MAY 1 FROM 9:00 AM TO 3:00 PM MDT

LOCATION: 2652 SOUTH 2700 WEST, SALT LAKE CITY, UT 84119



G & L HORIZONTAL BORING MILL, CINCINNATI SABRE 1000 VERTICAL CNC MACHINING CENTER, MORI SEIKI SL-4 CNC LATHE, MORI SEIKI, WEBB, MONARCH, SUMMIT & NILES ENGINE LATHES, LAGUN & ACER VERTICAL MILLS, VAN NORMAN HORIZONTAL MILL, W.F. WELLS HORIZONTAL BAND SAW, HYSTER & DAEWOO FORKLIFTS, WELDERS, INSPECTION, METAL MATERIAL, TOOLING AND RELATED ITEMS



UNITED
ASSET SALES
ROY GAMITYAN, AUCTIONEER

ROY GAMITYAN, AUCTIONEER

23945 Calabasas Road, Suite 209, Calabasas, CA 91302
Office 818.264.4232 | roy@unitedassetsales.com

WWW.UNITEDASSETSALES.COM

PUBLIC ONLINE AUCTION

INSPECT ONSITE AND BID ONLINE

NORTHWEST MACHINE

ONLINE AUCTION CLOSES:

TUESDAY, MAY 2 STARTING AT 11:00 AM MDT

INSPECTION:

MONDAY, MAY 1 FROM 9:00 AM TO 3:00 PM MDT

INSPECTION LOCATION:

2652 SOUTH 2700 WEST, SALT LAKE CITY, UT 84119

TERMS OF PAYMENT:

CASHIER'S CHECK, BUSINESS CHECK WITH BANK LETTER OF GUARANTEE, BANK WIRE TRANSFER. FULL PAYMENT MUST BE MADE NO LATER THAN 24 HOURS OF WINNING BID.

REMOVAL:

ALL ITEMS MUST BE REMOVED NO LATER THAN WEDNESDAY, MAY 10. NO EXCEPTIONS. PREPPING, REMOVAL, LOADING & TRUCKING IS THE RESPONSIBILITY OF THE BUYER.

BUYER'S PREMIUM:

18% FOR ALL PURCHASES.

REGISTER TO BID ONLINE NOW!

FOR COMPLETE SALE INFO: 818.264.4232
VISIT: WWW.UNITEDASSETSALES.COM
EMAIL: ROY@UNITEDASSETSALES.COM

ONLINE BIDDING PROVIDED BY

BidSpotter



UNITED
ASSET SALES
ROY GAMITYAN, AUCTIONEER

WWW.UNITEDASSETSALES.COM

23945 Calabasas Rd., Ste. 209, Calabasas, CA 91302
Office 818.264.4232 | roy@unitedassetsales.com

ROY GAMITYAN, AUCTIONEER
CA Bond# 63388305

HORIZONTAL BORING MILL

G & L, MODEL 45, 20" X 84" TABLE, 4' BAR, 48" VERTICAL, NO. 6 TAPER SPINDLE, TAILSTOCK, 15 HP, S/N 249



SHOP SUPPORT EQUIPMENT

2008 SULZER METCO METAL SPRAY SYSTEM, MODEL 5MPE REV. D, S/N D5MPE100809-2

VAN NORMAN #3 STD HORIZONTAL MILL W/ VERTICAL HEAD, 14" X 64" TABLE, S/N 6111

NORTON CYLINDRICAL GRINDER, MODEL E-P781, 14" X 48", AC SPINDLE DRIVE, S/N 24390

W.F. WELLS AUTOMATIC BAND SAW, MODEL Q14, 14" X 18" CAPACITY

TRINCO DRY BLAST CABINET, MODEL 40X40/BP2, S/N 170760

H-FRAME PRESS, HYDRAULIC, 49" BETWEEN UPRIGHTS, 24" STROKE, 4' VERTICAL, 25 HP

WALTER ROTARY TABLE, TILT, MODEL RTS 500 TG, S/N 2659

WALTER ROTARY TABLE, TILT, MODEL RTS 320 TG, S/N 2571

WALTER ROTARY TABLE, TILT, MODEL RTS 400 G, 2ND DIAL, S/N 2810

BUFFALO BENCH GRINDER, MODEL B10L, 2 HP

ELECTRONIC SCALE, METAL SPRAY SYSTEM

DELTA 10" CONTRACTOR SAW

ENCO 10" BENCH GRINDER, MODEL 89030, 2 HP

NAREX BORING HEAD, VHU 2-1/8", S/N 62613

A-FRAME HOIST W/ BUDGET 1-TON HOOK

MITUTOYO 82" VERNIER CALIPERS

HELIOS 52" VERNIER CALIPERS



VERTICAL MACHINING CENTER

CINCINNATI MILACRON SABRE 1000, MODEL ERO, ACRAMATIC 2100 CNC CONTROL, S/N 7039A01 95 0594



TURNING CENTER

MORI SEIKI SL-4A, YASNAC 2000 GII CNC CONTROL, 10" 3-JAW CHUCK, TAILSTOCK, 10-STATION TURRET, CHIP CONVEYOR, S/N 941



VERTICAL MILLS

LAGUN, MODEL FTV-510, 11" X 59" TABLE, ACCURITE III 2-AXIS DRO, 8" RISER, AUTO LUBE, S/N 27944

ACER ULTIMA MILL, MODEL 3VK, 10" X 50" TABLE, SARGON 2-AXIS DRO, 3 HP, VARI SPEED, POWER FEED, S/N 9366816



LATHES

SUMMIT, 4" HOLE THRU, EMCO MAIER 16" 4-JAW CHUCK, 19" X 80" CC, STEADY REST, TAPER ATTACHMENT, FOLLOW RESTS, S/N 3254301

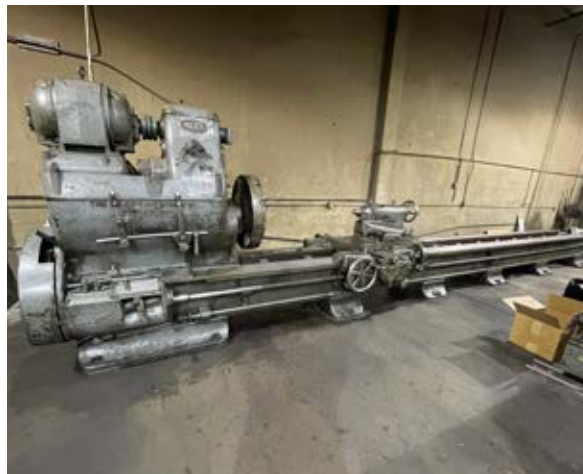
NILES TIME SAVER, 30" 4-JAW CHUCK, 42" X 24' CC, ROLLER STEADY REST, 12" 3-JAW CHUCK, 25 HP, S/N 21278

MONARCH, MODEL #71, 20" X 54", CONVERTED TO AC DRIVE, QC TOOL POST, STEADY REST, 12" 3-JAW CHUCK, 1800 RPM, ASSORTED SOFT & TOP JAWS, S/N 46748

WEBB, 20" X 60" CC, GAP BED, 12" 3-JAW CHUCK, QC TOOL POST, STEADY RESTS, 10 HP, S/N L118002-10

MORI SEIKI, MODEL MR-1500, 20" X 60" CC, 12" 3-JAW CHUCK, QC TOOL POST, STEADY REST, S/N 2470

MORI SEIKI, MODEL MR-2000, 20" X 72" CC, S/N 4057



PUBLIC ONLINE AUCTION

INSPECT ONSITE AND BID ONLINE

NORTHWEST MACHINE

ONLINE AUCTION CLOSURES: TUESDAY, MAY 2 STARTING AT 11:00 AM MDT

INSPECTION: MONDAY, MAY 1 FROM 9:00 AM TO 3:00 PM MDT

LOCATION: 2652 SOUTH 2700 WEST, SALT LAKE CITY, UT 84119

G & L HORIZONTAL BORING MILL, CINCINNATI SABRE 1000
VERTICAL CNC MACHINING CENTER, MORI SEIKI SL-4 CNC
LATHE, MORI SEIKI, WEBB, MONARCH, SUMMIT & NILES
ENGINE LATHES, LAGUN & ACER VERTICAL MILLS, VAN
NORMAN HORIZONTAL MILL, W.F. WELLS HORIZONTAL BAND
SAW, HYSTER & DAEWOO FORKLIFTS, WELDERS, INSPECTION,
METAL MATERIAL, TOOLING AND RELATED ITEMS

FORKLIFTS

HYSTER LPG, MODEL S120XLS, 10,400 LB CAPACITY, 2147 HOURS, 4' FORKS,
3-STAGE MAST, SIDE SHIFT, S/N D004D05072V

DAEWOO LPG, MODEL GC20S-2, 4,000 LB CAPACITY, 5789 HOURS, 4' FORKS,
3-STAGE MAST, SIDE SHIFT, S/N 06-05418



10,000 LB CAPACITY



SHOP SUPPORT EQUIPMENT cont...

LINCOLN WELDER SQUARE WAVE TIG-350 WELDER, BERNARD COOLER

CHICAGO BRIDGE & IRON CO. WELDER, MODEL CBI-400

MILLER DELTA FAB WELDER CV-DC, 24V WIRE FEEDER, BERNARD COOLER, MANUALS

GARDNER DENVER ELECTRA SAVER II ROTARY SCREW AIR COMPRESSOR, 30 HP



4,000 LB CAPACITY

