

PUBLIC ONLINE AUCTION

INSPECT ONSITE AND BID ONLINE

INLINE THERMOFORMERS, PLASTIC INJECTION MOLDERS & HAAS MACHINE SHOP

ONLINE AUCTION CLOSES: WEDNESDAY, AUGUST 23 STARTING AT 10:00 AM PDT

INSPECTION: TUESDAY, AUGUST 22 FROM 9:00 AM TO 3:00 PM PDT

LOCATION: 375 JOE SMITH ROAD, BISHOP, CA 93514



(3) SENCORP 2500 & SENTINEL 2200 INLINE THERMOFORMERS, CINCINNATI, VAN DORN DEMAG & ALLROUNDER INJECTION MOLDERS, 2009 ARBURG 175V 125-30 VERTICAL INJECTION MOLDER, PLASTIC GRINDERS & GRANULATORS, ATLAS TRAY SEALER, PAD PRINTER, MATERIAL DRYERS, 2006 HAAS VF-2DYT, 2003 HAAS VF-2 & PARTNER VERTICAL MACHINING CENTERS, (3) WEBB & BRIDGEPORT MILLS, WEBB GAP BED LATHE, SURFACE GRINDERS, FORKLIFTS, (6) TRACTOR TRAILERS, PALLET RACKING, CONVEYORS AND RELATED ITEMS



UNITED
ASSET SALES
ROY GAMITYAN, AUCTIONEER

ROY GAMITYAN, AUCTIONEER CA BOND# 63388305
23945 Calabasas Road, Suite 209, Calabasas, CA 91302
Office 818.264.4232 | roy@unitedassetsales.com

WWW.UNITEDASSETSALES.COM

PUBLIC ONLINE AUCTION

INSPECT ONSITE AND BID ONLINE

INLINE THERMOFORMERS, PLASTIC INJECTION MOLDERS & HAAS MACHINE SHOP

ONLINE AUCTION CLOSES:

WEDNESDAY, AUGUST 23 STARTING AT 10:00 AM PDT

INSPECTION:

TUESDAY, AUGUST 22 FROM 9:00 AM TO 3:00 PM PDT

INSPECTION LOCATION:

375 JOE SMITH ROAD, BISHOP, CA 93514

TERMS OF PAYMENT:

CASHIER'S CHECK, BUSINESS CHECK WITH BANK LETTER OF GUARANTEE, BANK WIRE TRANSFER. FULL PAYMENT MUST BE MADE NO LATER THAN 24 HOURS OF WINNING BID.

REMOVAL:

ALL ITEMS MUST BE REMOVED NO LATER THAN WEDNESDAY, SEPTEMBER 6. NO EXCEPTIONS. PREPPING, REMOVAL, LOADING & TRUCKING IS THE RESPONSIBILITY OF THE BUYER.

BUYER'S PREMIUM:

18% FOR ALL PURCHASES.

REGISTER TO BID ONLINE NOW!

FOR COMPLETE SALE INFO: 818.264.4232
VISIT: WWW.UNITEDASSETSALES.COM
EMAIL: ROY@UNITEDASSETSALES.COM

ONLINE BIDDING PROVIDED BY

BidSpotter



UNITED
ASSET SALES
ROY GAMITYAN, AUCTIONEER

WWW.UNITEDASSETSALES.COM

23945 Calabasas Rd., Ste. 209, Calabasas, CA 91302
Office 818.264.4232 | roy@unitedassetsales.com

ROY GAMITYAN, AUCTIONEER
CA Bond# 63388305

CNC VERTICAL MACHINING CENTERS

2006 HAAS VF-2DYT, HAAS VOP-A, XYZ EXTENDED TRAVELS: 30" X 20" X 20", 36" X 18" TABLE, 10,000 RPM, 20 HP VECTOR DUAL DRIVE, 40 TAPER SPINDLE, 20 ATC, AUTOMATIC CHIP AUGER, HAAS CNC CONTROL, XENON WORK LIGHTS, S/N 48922, 7391 SPINDLE HOURS

2003 HAAS VF-2, HAAS VOP-A, XYZ TRAVELS: 30" X 16" X 20", 36" X 18" TABLE, 10,000 RPM, 20 HP VECTOR DUAL DRIVE, 40 TAPER SPINDLE, 20 ATC, AUTOMATIC CHIP AUGER, HAAS CNC CONTROL, XENON WORK LIGHTS, S/N 33667, 6747 SPINDLE HOURS

MILLTRONICS PARTNER VM-30, SERIES A, CENTURION V CNC CONTROL, S/N 4044



PLASTIC SUPPORT EQUIPMENT

ATLAS VAC TRAY SEALER, STYLE STD, 15" X 18", S/N 50499 (NEW-NEVER USED)

KF SYSTEMS KF 500-M PAD PRINTER, 2" X 3", S/N 1000485-95 (NEW-NEVER USED)

ALLOYD 20S-12 X 16 RF BLISTER SEALER, S/N 89-827

QVAC SAMPLE FORMER PC2430 PD, S/N 040 306

PNEU-CON P 806 COLOR BLENDER SYSTEM, S/N 15019

(2) CYCLONE REGRIND SYSTEMS

CONAIR BLENDER, S/N A03RS1T 8A-0921

IMS DR350 MATERIAL DRYERS, DR350, S/N'S 446900, 447503

(2) IMS DR-350 DRYING OVENS, 8-DRAWER, BENCH TYPE, 11" X 25", 350 DEGREE

PLASTIC PROCESS DRUM SHAKER

EMI CA-12 INCLINE BELT CONVEYORS

IMS STATIC ELIMINATOR, HIGH VOLUME



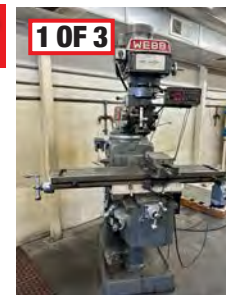
MACHINE SHOP EQUIPMENT

WEBB 17G X 40 GAP BED LATHE, 17" X 40" CC, 10" 3-JAW CHUCK, TAILSTOCK, THREADING, QUICK CHANGE TOOL POST, 32-1800 RPM, 5 HP, REMOVABLE GAP, S/N 902001002

(3) WEBB 3VK VERTICAL MILLS, 50" X 10" TABLE, POWER FEED, SARGON DRO, S/N'S 824359, 803173, 803171

BRIDGEPORT VERTICAL MILL, 9" X 42" TABLE, MANUAL FEED, SARGON DRO, S/N 157982

1998 CHIMER CM 240R EDM, SINKER TYPE, 19" X 13" WORKTABLE, 11" X 7" TABLE TRAVEL, SONY XYZ DRO, 50MP POWER SUPPLY, S/N M707547



INLINE THERMOFORMERS

1996 SENCORP 2500, SENCORP COMPUTER OPERATOR STATION, SENCORP UPDATED WINDOWS 7 PROFESSIONAL SOFTWARE, 30" X 33" MOLD SIZE, VACUUM FORMING PLATEN, PRESSURE FORMING STATION, 30" X 33" TRIMMING PLATEN, STACKER STATION, FILM REEL LOADING STATION, KNOCKOUT STATION, BECKER VACUUM PUMP, UNWIND STAND, ROLL-FED, S/N 27046095

1993 SENCORP 2500, SENCORP COMPUTER OPERATOR STATION, SENCORP UPDATED WINDOWS 7 PROFESSIONAL SOFTWARE, 30" X 33" MOLD SIZE, VACUUM FORMING PLATEN, PRESSURE FORMING STATION, 30" X 33" TRIMMING PLATEN, STACKER STATION, FILM REEL LOADING STATION, BECKER VACUUM PUMP, UNWIND STAND, ROLL-FED, S/N 27041293

SENCORP 2200, 30" X 34" VACUUM FORMING PLATEN, PRESSURE FORMING STATION, 19" X 24" TRIMMING PLATEN, STACKER STATION, FILM REEL LOADING STATION, BECKER VACUUM PUMP, ALLEN BRADLEY PLC CONTROL, ROLL-FED, S/N 622-070-86



1 OF 2

UPDATED WINDOWS 7 SOFTWARE



250 TON

HORIZONTAL PLASTIC INJECTION MOLDERS

CINCINNATI, 250-TON 12 OZ E/P PC 111, 12 OZ SHOT SIZE, 38" X 38" PLATENS, MATERIAL HOPPER, S/N 4082A2A21/79-19

VAN DORN DEMAG 170-HT-6F, 170-TON, 8 OZ SHOT SIZE, 20" X 20" PLATENS, MATERIAL HOPPER, PATHFINDER 2500 CONTROL, S/N 0679

(5) ARBURG MODEL 305-210-700, 70-TON, MATERIAL HOPPER, S/N'S 153266, 132007, 129113, 126809, 126721

VERTICAL PLASTIC INJECTION MOLDER

2009 ARBURG 175V 125-30, 14 TON, 0.49 OZ SHOT SIZE, 18 MM SCREW DIAMETER, SELOGICA CNC CONTROL, MATERIAL HOPPER, S/N 211426 (NEW-12 SAMPLE PARTS PRODUCED ONLY)

2009



NEVER USED!



1 OF 5

AIR COMPRESSORS & AIR DRYER

(2) INGERSOLL RAND SSR-EP100, ROTARY SCREW TYPE, 100 HP, 125 PSIG, S/N'S CK7505U07031, CK8879U09167

(2) KAESER CS91, ROTARY SCREW TYPE, 75 HP, 125 PSIG

LEROI 30 SST, 30 HP

KAESER TG301E AIR DRYER, KARD SERIES, 230 PSIG, S/N K1000C4600507044



1 OF 2

WATER COOLING TOWERS & CHILLERS

THERMAL CARE PT, S/N TK26535

THERMAL CARE TWC-500, S/N 25424-1



PLASTIC MATERIAL GRINDERS & GRANULATORS

2006 RAPID R-36, 35" X 13" OPENING, 40 HP, S/N 75655.001

2002 RAPID R-36, 35" X 13" OPENING, 40 HP, S/N 430.31

GRANULATOR LP 400, S/N 0-5213

GRANULATOR LP 350, S/N 0-5212

CONAIR GRANULATOR FP-735, S/N'S S8152, 05211

CONAIR GRANULATOR FP-35

1 OF 2



1 OF 2



PUBLIC ONLINE AUCTION

INSPECT ONSITE AND BID ONLINE

INLINE THERMOFORMERS, PLASTIC INJECTION MOLDERS & HAAS MACHINE SHOP

PLANT SUPPORT & RELATED ITEMS

- RAMCO RP50 H-FRAME PRESS, 50-TON CAPACITY, S/N CC47
- ECONOMY MV-60 DIE LIFT, 750 LB CAPACITY, 60" LIFT, S/N 0036600
- BIG JOE DIE LIFT
- FLOOR & BENCH DIGITAL PLATFORM SCALES
- BALDOR & JET DBL END PEDESTAL TYPE GRINDERS
- JET CHAIN HOISTS & JIBS
- PALLET JACKS, PALLET RACKING, CARTS, CABINETS, TABLES, MOLDS, PLASTIC MATERIALS



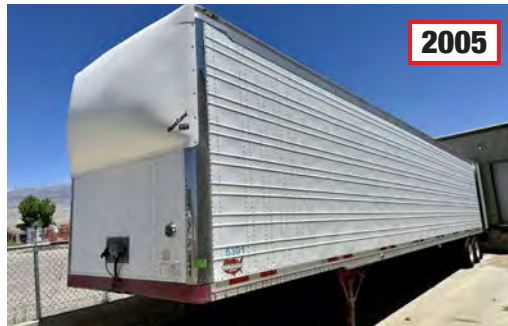
MACHINE SHOP continued

- CHEVALIER FSG-618M SURFACE GRINDER, 6" X 18" WALKER MAGNETIC CHUCK, S/N A3784073
- BOYAR-SCHULTZ H618 CHALLENGER SURFACE GRINDER, 6" X 18" MAGNETIC CHUCK, S/N C-2699
- K.O. LEE ID/OD B2060H GRINDER, 5" GRINDING WHEEL, 5" X 37" TABLE WORKING SURFACE, 3450 RPM, S/N 13281 AJ
- TORIT DUST COLLECTOR
- SKAT BLAST CABINET, DUST COLLECTOR
- DECKEL GK PANTOGRAPH, S/N 55521
- FEINMECHANIK DECKEL D-812 TOOL GRINDER, S/N S0/76-17592
- MILLER DIALARC HF WELDER
- MILLER MILLERMATIC 130 ARC WELDER
- STARRETT SIGMA HB350 OPTICAL COMPARATOR, S/N 1273



VAN TRAILERS

- 2005 WABASH NATIONAL, 53', 2-AXLE, NOSE CONE, VIN 1JJV532W35L916825, LICENSE 4EN9836
- (2) 1995 FRUEHAUF, 48', 2-AXLE, LICENSE 4HJ3731, 4HJ3732
- (3) STORAGE TRAILERS



FORKLIFTS

- TOYOTA MODEL 42-5FG25 LPG, 4,000 LB CAPACITY, 3-STAGE MAST, LOAD LIGHTS, S/N 405FGU25-77495
- TOYOTA LPG, 4,000 LB CAPACITY, 2-STAGE MAST, LOAD LIGHTS



4,000 LB CAPCITY



4,000 LB CAPCITY