

PUBLIC WEBCAST AUCTION

BID ONSITE OR BID ONLINE

MAJOR METAL CASTING FOUNDRY

AUCTION: TUESDAY, DECEMBER 11 AT 11:00 AM PST

**INSPECTION: MONDAY, DECEMBER 10 FROM 9:00 AM TO 3:00 PM PST AND
MORNING OF SALE FROM 8:00 AM TO 11:00 AM PST**

LOCATION: 860 ARROYO STREET, SAN FERNANDO, CA



2001 DISAMATIC DISAMATCH 130 AUTOMATIC MOLDING MACHINE METALCAST 4 LINE MOLD HANDLING SYSTEM WEIGHT AND JACKET SHIFTER, (2) THERMTRONIX 2000# MELTING FURNACES, (3) THERMTRONIX 900# MELTING FURNACES AS LATE AS 2007, 2012 STATES M2500 RINGMULLER AND 90 TON SAND SYSTEM, (3) OSBORN JOLT SQUEEZE AND ROTOLIFT MOLDING MACHINES, (4) DEPENDABLE 400 AND 200 SHELL CORE MACHINES, 2005 PALMER M50 XL CORE MAKER SYSTEM, GAYLORD CORE MACHINE SATB 30, 2006 TINKER OMEGA MIXER, (2) PALMER M200 MIXERS, TINKER OMEGA CT1000 COMPACTION TABLE, ROLLER CONVEYERS, GOFF TUMBLAST CLEANING MACHINE, 2001 PYRO INDUSTRIAL OVEN, HERSHAL CORE KNOCKOUTS, DEPENDABLE RECLAIM SYSTEM, (4) BURR KING SANDERS, LEROI CL50SS AIR COMPRESSOR, (2) VERTICAL BAND SAWS, WELDERS, FLASKS, JACKETS AND BOTTOM BOARDS, FORD BOX TRUCK, TOYOTA STAKE TRUCK, TOYOTA FORKLIFTS AND RELATED ITEMS



UNITED
ASSET SALES
ROY GAMITYAN, AUCTIONEER

OFFICE 818.264.4232 | ROY@UNITEDASSETSALES.COM

COMPLETE CATALOG & BIDDING INFO:
WWW.UNITEDASSETSALES.COM

IF YOU OR SOMEONE YOU KNOW WOULD LIKE TO
HAVE AN AUCTION SALE, CALL US: 818.264.4232.
WE OFFER THE BEST FINDER'S FEE IN THE BUSINESS.

FL Sales Inc.
Equipment, Appraisals, Liquidations, Auctions

www.flsales.com

WWW.UNITEDASSETSALES.COM

PUBLIC WEBCAST AUCTION

BID ONSITE OR BID ONLINE

MAJOR METAL CASTING FOUNDRY

WEBCAST AUCTION:

TUESDAY, DECEMBER 11 AT 11:00 AM PST

INSPECTION:

MONDAY, DECEMBER 10 FROM 9:00 AM TO 3:00 PM PST AND MORNING OF SALE FROM 8:00 AM TO 11:00 AM PST

LOCATION:

860 ARROYO STREET, SAN FERNANDO, CA

TERMS OF PAYMENT:

CASH, CASHIER'S CHECK, BUSINESS CHECK WITH BANK LETTER OF GUARANTEE, BANK WIRE TRANSFER. FULL PAYMENT MUST BE MADE NO LATER THAN 24 HOURS OF WINNING BID.

REMOVAL:

ALL ITEMS MUST BE REMOVED NO LATER THAN FRIDAY, DECEMBER 21. NO EXCEPTIONS.

BUYER'S PREMIUM:

15% FOR ALL ONSITE PURCHASES AND 18% FOR ALL ONLINE PURCHASES.

ONLINE BIDDING PROVIDED BY



UNITED
ASSET SALES
ROY GAMITYAN, AUCTIONEER

WWW.UNITEDASSETSALES.COM

23945 Calabasas Rd., Ste. 209, Calabasas, CA 91302

Office 818.264.4232 | roy@unitedassetsales.com

ROY GAMITYAN, AUCTIONEER

CA Bond# 63388305

MOLDING MACHINES

2001



MOLD HANDLING SYSTEM

2001 DISAMATIC MODEL DISAMATCH 130 AUTOMATIC MOLDING MACHINE FEED BELT CONVEYOR 5 HP DRIVE AND BELT AIREATOR, ENCLOSURE, 30 HP HYDRAULIC SYSTEM, AIR RECEIVING TANK, PLC CONTROLS, DIRECT LINE TO DISAMATIC FOR MONITORING & PARTS, S/N 11005

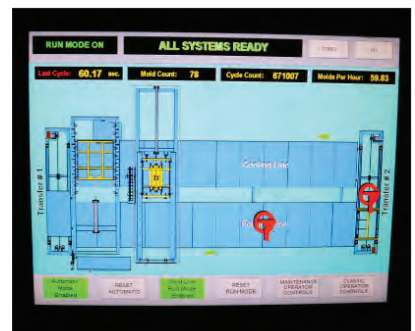
2001 METALCAST KISSMATIC MODEL HANDLING SYSTEM (2) TRANSFER STATIONS, WEIGHT AND JACKET SHIFTER, PLOW STATION, 44-MOLDS CAPACITY, ALLEN BRADLEY SLC5/03 PLC, 671,960 MOLD COUNT, S/N 00-127

CONVEYOR DYNAMICS 30" X 15' INCLINE DISCHARGE CONVEYOR SCREEN AND DRIVE

OSBORN MODEL 3161 RJW ROTOLIFT MOLDING MACHINE, MOLD HANDLER, S/N 1000-10459

OSBORN MODEL 212P JOLT SQUEEZE MOLDING MACHINE, S/N 1507H

OSBORN MODEL 3161-8 ROTOLIFT MOLDING MACHINE, MOLD HANDLER, S/N 14977G



CORE MACHINES

DEPENDABLE MODEL 400SA SEMI-AUTOMATIC SHELL CORE MACHINE, S/N 305, GAS PANEL AND HYDRAULIC SYSTEM

DEPENDABLE MODEL 400SA SEMI-AUTOMATIC SHELL CORE MACHINE, FOR PARTS ONLY

DEPENDABLE MODEL 200SA SEMI AUTOMATIC SHELL CORE MACHINE, S/N 995, GAS PANEL AND HYDRAULIC SYSTEM

DEPENDABLE MODEL 100M SHELL CORE MACHINE, NO SERIAL NUMBER, GAS PANEL



2012



BLAST CLEANING

GOFF 6BB RUBBER BELT TUMBLAST CLEANING MACHINE, DIRECT DRIVE SHOT WHEEL AND DUST COLLECTOR

OVENS

2001 EPS 6' X 6' X 6' WALK-IN TYPE OVEN MODEL P-5DOHVG253.5, 500 DEGREE MAX TEMPERATURE, PARTLOW DIGITAL CHART RECORDER, S/N 769
STEELMAN MODEL 444EPC3 4' X 4' X 4' BAKE OVEN, 2 DOOR, CONVECTION OVEN 240 KW, S/N 81101

MULLER AND SAND SYSTEM

1500 CU FT 12' DIAMETER BOLTED SAND SILO SUPPORT AND KINERGY MODEL KBA-8D 8' LIVE BOTTOM FEEDER S/N KBA-2715

24" X 14' 5 HP DISCHARGE BELT CONVEYOR, 5 HP BENTONITE FEEDER AND HOPPER

2012 STATES MODEL M2500 TWO STAGE RINGMULLER, ALLEN BRADLEY SLC5/02 PLC CONTROLS, S/N M2500-100-30-6167

24" X 21' CLEATED INCLINE BELT CONVEYOR 7.5 HP DRIVE

24" X 95' SELF-SUPPORTING DISTRIBUTION BELT CONVEYOR 5 HP DRIVE, (5) AIR OPERATED PLOW STATIONS, (4) MOLDERS HOPPERS AIR GATES

STATES 36' LONG TRENCHVEYOR, 5 HP DRIVE

STATES 83' LONG TRENCHVEYOR, 15 HP DRIVE

STATES RETURN SAND BUCKET ELEVATOR MODEL D10620 APPROX 40' TALL, 7.5 HP DRIVE

STATES MODEL RS4080 SAND SCREEN 5 HP DRIVE

RECLAIM SYSTEM

RECLAIM SYSTEM 4' X 4' LUMP REDUCER DRIVES, APPROX. 15' BUCKET ELEVATOR DRIVE, SAND COOLER/CLASSIFIER, APPROX. 20' BUCKET ELEVATOR DRIVE, SAND SILO SUPPORTS, DEPENDABLE PULSE DUST COLLECTOR BLOWER



MIXERS AND CORE MAKERS

2005



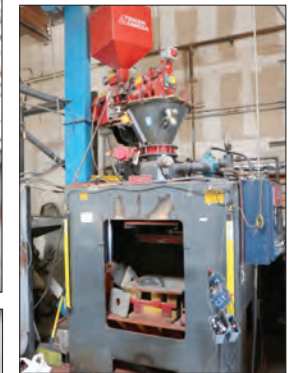
PALMER MODEL M200 200# CONTINUOUS SAND MIXER, PUMPS AND STAND, 1266 HOURS, S/N M4060

2001 PALMER MODEL M100XL CONTINUOUS SAND MIXER, PUMPS AND STAND, 1032 HOURS, S/N M290XL

2001 GAYLORD CORE MACHINE SYSTEM TINKER OMEGA TOM 125 CONTINUOUS MIXER, PUMPS AND FEED BUCKET ELEVATOR, GAYLORD MODEL SAAB 30S COLD BOX CORE MACHINE S/N 0629C642 ALLEN BRADLEY MICROLOGIC 1200 PLC, ENCLOSURE, S/N TM1-111

GAYLORD MODEL MED-CSS METHYL FORMATE GENERATOR MEL-G75 AND 9125AH-2 HEATER
2005 PALMER MODEL CM25 CORE MAKER SYSTEM, PALMER M50XLD CONTINUOUS MIXER, ENCLOSURE, PUMPS, AND CONTROLS, 133 HOURS, S/N CM129

TINKER OMEGA MODEL CT-1000-2 1000# COMPACTION TABLE



1 OF 2



MELTING

2007 THERMTRONIX MODEL GS2000 2000# GAS FIRED MELTING FURNACE, GAS SYSTEM AND CONTROLS, S/N 071021

2006 THERMTRONIX MODEL GS2000 2000# GAS FIRED MELTING FURNACE, GAS SYSTEM AND CONTROLS, S/N 061881

2002 THERMTRONIX MODEL GS900 900# GAS FIRED MELTING FURNACE, GAS SYSTEM AND CONTROLS, S/N 021724

2001 THERMTRONIX MODEL GS900 900# GAS FIRED MELTING FURNACE, GAS SYSTEM AND CONTROLS, S/N 011881

2001 THERMTRONIX MODEL GS900 900# GAS FIRED MELTING FURNACE, GAS SYSTEM AND CONTROLS, S/N 011859

PYROSYSTEM MODEL 600AMF 600# GAS FIRED STATIONARY MELTING FURNACE, GAS SYSTEM

PYROSYSTEM MODEL 600A0D-R 600# GAS FIRED STATIONARY MELTING FURNACE, GAS SYSTEM

PLANT SUPPORT & RELATED ITEMS

2005 PALMER 6' DIAMETER 3/4 HP ROTARY TABLE S/N CF191 FOOT PEDAL OPERATION, STEEL TABLE VISE, PORTABLE CORE RACKS, FANS, 4' X 6' GRANITE PLATE, NUTS AND BOLTS, CHOP SAW, AIR AND ELECTRIC TOOLS HAND LADLES, RATS MODEL 401 VACUUM TESTER S/N 1612, PORTABLE ROTARY DEGASSER, (3) PIG MOLDS, SIMPLICITY MODEL 34LS 3'X 4' SCREEN S/N 34-SL-101, WOOD BOTTOM BOARDS, SCREENS, WHEELBARROWS, FREMONT FLASKS, FREMONT JACKETS, 30' OF 18" ROLLER CONVEYOR, 60' OF 21" ROLLER CONVEYOR, AIR RAMMERS, 90' OF 18" ROLLER CONVEYOR AND 90-DEGREE CURVE, DEMAG 2200# ELECTRIC HOIST PENDENT CONTROLS AND APPROX. 20' BRIDGE, MILLER MILLERMATIC 135 WIRE FEED WELDER, STATES M2500 RINGMULLER NOT IN SERVICE, PALMER SAND HOPPER, TORIT MODEL V5550 DUST COLLECTOR, LINCOLN 375 PRECISION TIG WELDER, MILLER MILLERMATIC 212 WELDER, LADDERS

CORE KNOCKOUT

HERSHAL MODEL HP60 CORE KNOCKOUT A FRAME



PUBLIC WEBCAST AUCTION

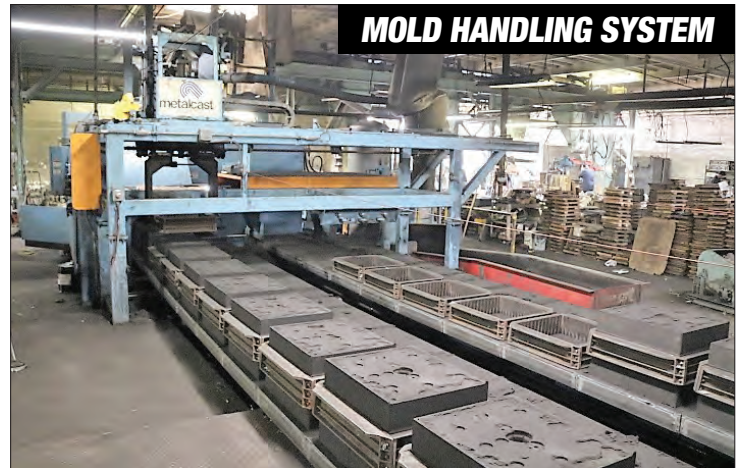
BID ONSITE OR BID ONLINE

MAJOR METAL CASTING FOUNDRY

AUCTION: TUESDAY, DECEMBER 11 AT 11:00 AM PST

**INSPECTION: MONDAY, DECEMBER 10 FROM 9:00 AM TO 3:00 PM PST AND
MORNING OF SALE FROM 8:00 AM TO 11:00 AM PST**

LOCATION: 860 ARROYO STREET, SAN FERNANDO, CA



FORKLIFTS

TOYOTA MODEL 8FG25 4850# L/P POWERED FORK LIFT TRUCK, SIDE SHIFTER, 189" LIFT, S/N 18853

mitsubishi MODEL FG25 4500# L/P POWERED FORK LIFT TRUCK, 190" LIFT, SIDE SHIFTER, S/N AF17B-04887



AIR COMPRESSORS

SULLAIR MODEL LS20-50 50HP AIR COOLED AIR COMPRESSOR, 24,820 HOURS, DIGITAL READOUT, S/N 003-127013

HANKISON MODEL HPRP200-468 200 CFM AIR DRYER, S/N H200A46001100187

3 STAGE TANK MOUNTED 10 HP AIR COMPRESSOR

LEROY MODEL CL50SS 50 HP AIR COOLED AIR COMPRESSOR, S/N V9K94487X38

2014 BEZO MODEL DO-RQC 220-AN-EB DRYPORT RA AIR DRYER, S/N 14S01059/14



VEHICLES

FORD MODEL F-450 XL SUPER DUTY BOX TRUCK POWER STROKE DIESEL V8, MARATHON 15' BOX BODY

2001 TOYOTA STAKE BODY TRUCK

GRINDERS AND SAWS

(4) BURR KING MODEL 960-250 SINGLE END BACKSTAND TYPE GRINDERS, 3 HP

TANNEWITZ 36" VERTICAL BAND SAW

DO ALL MODEL ZV-3620 36" VERTICAL BAND SAW, S/N 31-677442



COMPLETE CATALOG & BIDDING INFO:

WWW.UNITEDASSETSALES.COM

IF YOU OR SOMEONE YOU KNOW WOULD LIKE TO HAVE AN AUCTION SALE, CALL US: 818.264.4232.
WE OFFER THE BEST FINDER'S FEE IN THE BUSINESS.

