

# (2) ONLINE ONLY AUCTIONS

**INSPECT ONSITE AND BID ONLINE**

## MAJOR STEEL CASTING FOUNDRY

### PACIFIC STEEL CASTING

**ONSITE INSPECTION LOCATION: 1333 SECOND STREET, BERKELEY, CA 94710**

**SALE #1: BIDDING CLOSES: THURSDAY, JUNE 14 AT 9:00 AM PDT**

**ONSITE INSPECTION DATES: JUNE 11, 12 & 13 OR BY APPOINTMENT ONLY**

**CONTENTS OF PLANT #1 & MOST OF PLANT #3**

**SALE #2: BIDDING CLOSES: THURSDAY, AUGUST 16 AT 9:00 AM PDT**

**ONSITE INSPECTION DATES: AUGUST 13, 14 & 15 OR BY APPOINTMENT ONLY**

**CONTENTS OF PLANT #2 AND ANY REMAINING ITEMS, INSPECTION, SHIPPING, ROLLING STOCK, ETC.**



(3) 7' AND 8' ARC MELTING FURNACES 2000 AND 3125 KVA, COMPLETE NO BAKE LINE 68" X 68" WITH 1500# MIXER, 15,000# ROLLOVER AND RELATED, (2) BMM CT6 MOLDING MACHINES, BMM CT3 MOLDING MACHINE, HUNTER 20C MOLDING MACHINE, (6) SHALCO DSM 3 SHELL MOLDING MACHINES, B AND P 75B MULLER WITH HARTLEY CONTROLS, (4) REDFORD HS16 SHELL CORE MACHINES, DEPENDABLE 400 AND 200 SHELL CORE MACHINES, (2) B AND P SF6CA SHELL CORE MACHINES, COMPLETE SHELL COATING SYSTEM, COMPLETE DEPENDABLE THERMAL RECLAIM SYSTEM RATED AT 2TPH, SHELL POURING AND SHAKEOUT SYSTEM, OVER (30) BELT CONVEYOR, BUCKET ELEVATORS, SHAKEOUTS AND OSCILLATING CONVEYOR, OVER 1000' OF ROLLER CONVEYORS, INSPECTION AND BRINELL TESTERS, COMPLETE MAINTENANCE DEPARTMENTS, ROLLING STOCK, AIR TOOLS, ELECTRIC TOOLS, AND LOTS, LOTS MORE.



Office 818.264.4232 | Cell 818.388.6033  
roy@unitedassetsales.com

REICH BROTHERS

[www.reichbros.com](http://www.reichbros.com)



[www.flsales.com](http://www.flsales.com)

**WWW.UNITEDASSETSALES.COM**

# (2) ONLINE ONLY AUCTIONS

INSPECT ONSITE AND BID ONLINE

## MAJOR STEEL CASTING FOUNDRY PACIFIC STEEL CASTING

### ONSITE INSPECTION LOCATION:

1333 SECOND STREET, BERKELEY, CA 94710

### SALE #1: BIDDING CLOSES:

THURSDAY, JUNE 14 AT 9:00 AM PDT ONSITE

INSPECTION DATES: JUNE 11, 12 & 13 OR

BY APPOINTMENT ONLY

CONTENTS OF PLANT #1 & MOST OF PLANT #3.

### SALE #2: BIDDING CLOSES:

THURSDAY, AUGUST 16 AT 9:00 AM PDT

ONSITE INSPECTION DATES: AUGUST 13, 14 & 15 OR

BY APPOINTMENT ONLY

CONTENTS OF PLANT #2 AND ANY REMAINING ITEMS,  
INSPECTION, SHIPPING, ROLLING STOCK, ETC.

### TERMS OF PAYMENT:

CASH, CASHIER'S CHECK, BUSINESS CHECK WITH  
BANK LETTER OF GUARANTEE, BANK WIRE TRANSFER.  
FULL PAYMENT MUST BE MADE NO LATER THAN  
24 HOURS OF WINNING BID.

### REMOVAL:

STRICT REMOVAL GUIDELINES REQUIRED,  
CHECK ONLINE CATALOG FOR DETAILS.

### BUYER'S PREMIUM:

18% FOR ALL ONLINE PURCHASES

ONLINE BIDDING PROVIDED BY

**BidSpotter.com**



**UNITED**  
ASSET SALES

**WWW.UNITEDASSETSALES.COM**

23945 Calabasas Road, Suite 209, Calabasas, CA 91302

Office 818.264.4232 | Cell 818.388.6033

roy@unitedassetsales.com

**ROY GAMITYAN, AUCTIONEER**  
CA Bond# 63388305

## MELTING



SALE #1 & #2

## FLASKS

HUNDREDS AND HUNDREDS OF ALUMINUM, AND STEEL  
FLASKS VARIOUS SIZES



**SALE #1 PLANT #1 ELECTROMELT 7' DIAMETER ARC MELTING FURNACE WITH PRIMARY SWITCHGEAR, 2000 KVA TRANSFORMER 13,200 VOLT PRIMARY, 280 VOLT SECONDARY WITH TAPS**

**SALE #1 PLANT #3 WHITING 8 FT DIAMETER ELECTRIC ARC "ROCKER STYLE" MELTING FURNACE, 8" ELECTRODES, APPROX. 11,000# CAPACITY WITH PRIMARY SWITCHGEAR, 2000 KVA TRANSFORMER 13,200 VOLT PRIMARY, 240 VOLT SECONDARY WITH AUTOMATIC TAP CHANGER, HYDRAULIC SYSTEM AND CONTROLS**

**SALE #2 PLANT #2 ELECTROMELT 7' DIAMETER ARC MELTING FURNACE WITH 8" ELECTRODES, APPROX. 6500 # CAPACITY, PRIMARY SWITCHGEAR, 3125 KVA TRANSFORMER 13,200 VOLT PRIMARY, 280 VOLT SECONDARY WITH TAPS**

**SALE #2 SPARE 2000 KVA TRANSFORMER 13,200 VOLT PRIMARY, 280 VOLT SECONDARY WITH TAPS**

**SALES #1 & #2**

LEAF TYPE AND CLAM TYPE CHARGE BUCKETS, ALLOY BINS, 3-58" AND (3) 50" DIAMETER GEARED TEAPOT LADLES, 3-50" DIAMETER GEARED BOTTOM POUR LADLES, LADLE PREHEATERS, HAND LEVER LADLES, ELECTRONITE PYROMETERS MODEL DT325, DT374, DT200

SALE #1

## GREEN SAND MOLDING MACHINES

HUNTER MODEL HMP20C S/N A88D1010 OPP AUTOMATIC MOLDING MACHINE

(2) BMM MODEL CT6 SEMIAUTOMATIC MOLDING MACHINES

BMM MODEL CT3 SEMIAUTOMATIC MOLDING MACHINES

(2) SPO JOLT PIN LIFT MOLDING MACHINES

(2) MOLDERS HOPPERS WITH ROYER AERATORS

SALE #1

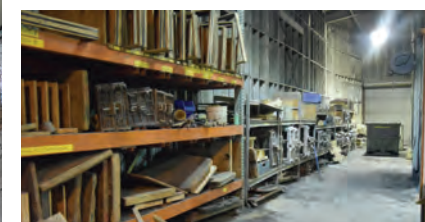
## MIXERS AND MULLERS

B AND P MODEL 75B SPEEDMULLER WITH HARTLEY COMPACTABILITY CONTROLS

(2) OMC0 MODEL MS1 SUPER BOWL MIXERS ONE WITH 2012 TINKER OMEGA 3 PUMP SYSTEM

CARVER MODEL 2CG S BLADE MIXER

SIMPSON PORTAMULLER



SALE #1

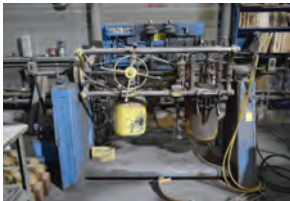
# NO BAKE MOLDING LINE

**NO BAKE MOLDING LINE INCLUDING**  
 OMCO 1500# CONTINUOUS MIXER WITH CONTROLS, PUMPS AND HYDRAULIC SYSTEM  
 KLOSTER TYP I 75# CONTINUOUS MIXER WITH CONTROLS AND PUMPS  
 68" X 68" BOTTOM PLATES  
 OMCO COMPACTION TABLE WITH CONTROLS  
 APPROX. 250' OF 42" POWERED ROLLER CONVEYOR AND SELF PROPELLED TRANSFER CARS  
 APPROX. 50' OF 42" NON-POWERED ROLLER CONVEYOR RELATED SAND HOPPER AND SUPPORTS  
 B AND P MODEL 15032 15,000# MOLD ROLLOVER  
 INTERNATIONAL MODEL MR-H 8000# HYDRAULIC MOLD ROLLOVER  
 MOLD WASH MIXERS, PUMPS AND RELATED



SALE #1 & #2

# CORE MACHINES AND CORE BLOWERS



**SALE #1** DEPENDABLE MODEL 400 SHELL CORE MACHINE WITH CONTROLS  
**SALE #1** DEPENDABLE MODEL 200SA SHELL CORE MACHINE WITH CONTROLS  
**SALE #1** (2) REDFORD MODEL SL4 SAND TRANSPORTER  
**SALE #2** (4) REDFORD MODEL HS16 RA SHELL CORE MACHINES WITH CONTROLS  
**SALE #2** (2) B AND P MODEL SF6CA SHELL CORE MACHINES WITH CONTROLS  
**SALE #2** (3) REDFORD MODEL SL4 SAND RETURN TRANSPORTERS  
**SALE #1** (2) B AND P MODEL CB5 CORE BLOWERS  
**SALE #1** (2) B AND P GASSING STATIONS

SALE #1 & #2

# CONVEYORS

LARGE QUANTITY OF BELT CONVEYORS, BUCKET ELEVATORS, SAND SCREENS AND RELATED ITEMS

# CONVEYORS OSCILLATING AND STEEL FLIGHT

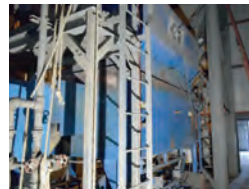
SALE #1

WABCO 24/36" X APPROX. 60' MOLD DUMP CONVEYOR WITH DRIVE  
 36" X APPROX. 25' STEEL FLIGHT CONVEYOR WITH DRIVE  
 G/K MODEL 18.25 18" X 25' OSCILLATING CONVEYOR WITH DRIVE

# CONVEYORS-ROLLER

SALE #1 & #2

APPROX. 250' OF 42" POWERED ROLLER CONVEYOR AND SELF PROPELLED TRANSFER CARS  
 APPROX. 50' OF 42" NON-POWERED ROLLER CONVEYOR  
 APPROX. 50' - 30" ROLLER CONVEYOR WITH CURVES  
 APPROX. 270' - 12" TO 20" ROLLER CONVEYORS  
 APPROX. 50' - 26" ROLLER CONVEYOR  
 APPROX. 200' - 18" ROLLER CONVEYOR



(3) SHELL PROCESS OR SHALCO MODEL DSM 3 SHELL MOLDING MACHINES EACH EQUIPPED WITH UNIVERSAL FEED BUCKET ELEVATOR, DRIVE, MOTOR, HYDRAULIC SYSTEM, (2) OVENS, PICKOFF SYSTEM, GAS SYSTEM, CONTROLS AND EITHER (2) 1520 PIN BONDERS WITH GLUE APPLICATORS OR (1) 2030 PIN BONDER WITH GLUE APPLICATOR

(2) SHELL PROCESS MODEL DSM 3 SHELL MOLDING MACHINES, MODIFIED FOR INLINE MOLDING  
 APPROX. 50- PORTABLE SHELL CARTS

SHELL COATING SYSTEM INCLUDING ; (2) BOLTED AND SKIRTED SAND SILOS, APPROXIMATELY 150 TON CAPACITY, COMMON DISCHARGE BUCKET ELEVATOR WITH DRIVE, MOTOR & CONTROLS, SAND HOPPER WITH SUPPORTS, BUCKET ELEVATOR WITH DRIVE, MOTOR & CONTROLS, SAND HEATER WITH CONTROLS, B & P SAND MULLER EQUIPPED WITH BATCH HOPPER, SCALE SYSTEM & BLOWER, 24" DISCHARGE SCREW CONVEYOR WITH DRIVE, MOTOR & CONTROLS, SIMPLICITY 3' X 6' SCREEN WITH DRIVE, MOTOR & CONTROLS, UNIVERSAL BUCKET ELEVATOR WITH DRIVE, MOTOR & CONTROLS, CUSTOM BELT SAND COOLING TOWER, UNIVERSAL BUCKET ELEVATOR WITH DRIVE, MOTOR & CONTROLS, SAND TRANSPORTER TO CONVEY SAND TO EACH DSM 3 MACHINE, SYSTEM CONTROLS AND SUPPORT EQUIPMENT

THERMAL RECLAIM SYSTEM WITH; DEPENDABLE LUMP REDUCER WITH DRIVE, MOTOR & CONTROLS, UNIVERSAL BUCKET ELEVATOR WITH DRIVE, MOTOR & CONTROLS, MAGNETIC SEPARATOR, UNIVERSAL BUCKET ELEVATOR WITH DRIVE, MOTOR & CONTROLS, SAND HOPPER WITH SUPPORT STRUCTURES, FEED SCREW CONVEYOR WITH DRIVE, MOTOR & CONTROLS, DEPENDABLE MODEL 2 TPH HTCC 2 TON PER HOUR GAS FIRED THERMAL SAND RECLAIMER S/N 228 HTCC WITH GAS SYSTEM & CONTROLS, DEPENDABLE SAND COOLER EQUIPPED WITH BAC MODEL VTO JDR COOLING TOWER, S/N 97200386, UNIVERSAL BUCKET ELEVATOR WITH DRIVE, MOTOR & CONTROLS, DEPENDABLE DFT II SAND TRANSPORTER S/N 279, 2" CAPACITY, RETURN STEEL BOLTED & SKIRTED SAND SILO, 150 TON CAPACITY, WITH SUPPORT EQUIPMENT

SHELL POURING AND SHAKEOUT SYSTEM WITH APPROXIMATELY 460 FT OF OVERHEAD CHAIN MONORAIL SYSTEM WITH SUPPORT STRUCTURES, DRIVE, MOTORS, CHAINS WITH TRAYS, 4' X 8' SHAKEOUT, BUCKET ELEVATOR, SAND HOPPER WITH SUPPORTS, AND CONTROLS

# SILOS

SALE #1 & #2

(2) 200 TON SAND SILOS WITH SUPPORTS  
 (3) APPROX. 150 TON SAND SILO AND SUPPORT

SALE #1

# PALLET LINES

(5) PALLET LINES APPROX. 70' LONG WITH 24" X 60" TRAYS, HYDRAULIC SCISSOR LIFT RETURN AND AIR OPERATED DUMPS, RELATED PLATFORMS

SALE #1 & #2

# SHAKEOUTS



8' X 14' SHAKEOUT WITH HOOD  
 8' X 8' SHAKEOUT WITH HOOD  
 4' X 8' SHAKEOUT WITH HOOD

SALE #1

# RECLAIM SYSTEMS

G/K MODEL VM120 LUMPS CRUSHER WITH CONTROLS  
 (3) SIMPSON 8 CELL PNEUMATIC SAND RECLAIMERS WITH CONTROLS



SALE #1 & #2

# FINISHING AND INSPECTION CELLS



ENCLOSURE WITH APPROX. 150' -36" ROLLER CONVEYOR, SCISSOR LIFT TABLES, FOUR SIDE DRAFT EXHAUSTS, APPROX. 7000 CFM DUST COLLECTOR WITH BLOWER AND MOTOR, WELDERS AND HOISTS

ENCLOSURE WITH APPROX. 100' -36" ROLLER CONVEYORS, TURNTABLES, FOUR SIDE DRAFT EXHAUSTS, APPROX. 7000 CFM DUST COLLECTOR WITH BLOWER AND MOTOR, WELDERS AND HOISTS

(4) ENCLOSURES EACH WITH WELDING TABLES, SIDE DRAFT EXHAUST COMMON APPROX. 8000 CFM DUST COLLECTOR WITH BLOWER AND MOTOR, WELDERS AND HOISTS

(8) FINISHING CELLS EACH WITH ENCLOSURE, 3' X 5' 4000# LIFT TABLE, MILLER DIMENSION 652 WELDER WITH WIRE FEEDER, AND GRINDING TABLE

INSPECTION CELL WITH 3' X 5' 4000# LIFT TABLE, MAGNAFLUX MODEL KRD MAGNETIC PARTICLE INSPECTION MACHINE

SALE #1 & #2

# TRANSPORTERS

(4) SAND TRANSPORTERS W/CONTROLS  
 (3) DYNAMIC AIR SAND TRANSPORTERS WITH CONTROLS  
 WENTWORTH 2" SAND TRANSPORTER WITH CONTROLS  
 WHIRL AIR FLO 6" SAND TRANSPORTER WITH CONTROLS



# MAGNETS

48" DIAMETER OHIO CRANE MAGNET  
 (2) 45" DIAMETER CRANE MAGNETS



# MANIPULATORS

(2) VULCAN MODEL 1500 CASTING MANIPULATORS WITH CONTROLS AND HYDRAULIC SYSTEMS



# INSPECTION AND BRINELL TESTERS

FARO PORTABLE MODEL STERLING CMM ARM  
 NUMEREX MODEL 4860-36 MD DUAL DEAM 48" X 60" X 36" COORDINATE MEASURING MACHINE WITH RENISHAW PH10-M STYLUS, JOYSTICK, GRANITE TABLE AND COMPUTER  
 HANSFORD MODEL RAPIDCHECK 2828-18 28" X 28" X 18" COORDINATE MEASURING MACHINE WITH RENISHAW PH1 STYLUS, GRANITE TABLE AND CONTROLS

# LAB SAND AND METALLURGICAL

GRAM BALANCES  
 THERMOLYNE MUFFLE OVENS  
 DIETERT 338 PERMMETER  
 OHAUS SCOUT PRO GRAM BALANCE  
 DIETERT 315 SAND RAMMER  
 FILLER TUBES  
 DIETERT 276 MOISTURE TESTERS  
 DIETERT MB CLAY TESTER  
 JET FILTER SYSTEM  
 (2) THERMO SCIENTIFIC MODEL 3460 OES SPECTROMETER  
 JARRELL ASH SERIES 800 ATOM COMP SPECTROMETER EQUIPPED WITH 13 ELEMENTS, COMPUTER AND PRINTER



# PRESSES

BIRDSBORO MODEL 50-5-0-11-22-31-2-M 50 TON C FRAME TYPE STRAIGHTENING PRESS WITH 24" X 36" TABLE, 9" RAM  
 CUSTOM BUILT STRAIGHTENING PRESS WITH 3" RAM, 13" THROAT, 30" X 60" TABLE, HYDRAULIC SYSTEM



# CRANES AND HOISTS

SALE #1 & #2



P AND H 15/5 TON OVERHEAD DOUBLE GIRDER TOP RUNNING BRIDGE CRANE, CAB OPERATED, 43' SPAN, 26' LIFT  
 (2) P AND H 15 TON OVERHEAD DOUBLE GIRDER TOP RUNNING BRIDGE CRANES, 51' SPAN, 28' LIFT, CAB OPERATED  
 10 TON OVERHEAD SINGLE UNDER HUNG RUNNING TRAVEL CRANE, PC 30' SPAN, 24' LIFT, 30' RUNWAY  
 DANDAS 12 TON OVERHEAD DOUBLE GIRDER TOP RUNNING BRIDGE CRANE, CAB OPERATED, 40' SPAN, 24' LIFT  
 MAY CITY 10 TON OVERHEAD DOUBLE GIRDER TOP RUNNING BRIDGE CRANE, CAB OPERATED, 40' SPAN, 24' LIFT  
 (2) BROADLINE 5 TON OVERHEAD DOUBLE GIRDER TOP RUNNING BRIDGE CRANES, 37' SPAN, 32' LIFT, PENDENT CONTROLS



3 TON APPROX. 40' SPAN SINGLE GIRDER BRIDGE CRANE WITH GARDNER DENVER HOIST  
 OVER 86 - 1/2 TON TO 3 TON BRIDGES AND HOISTS BOTH AIR AND ELECTRIC

# SHOT BLAST CLEANING MACHINES



2007 PANGBORN MODEL 12LK3 12' DIAMETER TABLAST SHOT CLEANING MACHINE WITH 3 BELT DRIVE SHOT WHEELS, SHOT SYSTEM AND CONTROLS  
 (2) PANGBORN MODEL 8LN 8' DOUBLE DOOR SWING TABLE CLEANING MACHINE S/N 8LN-651 AND NSN  
 PANGBORN MODEL 34 GN 34 CU FT TUMBLE BLAST CLEANING MACHINE, NSN EQUIPPED WITH SHOT SYSTEM AND FLOOR LOADER  
 PANGBORN 20 GN 20 CU FT TUMBLAST CLEANING MACHINE S/N 20GNM-594  
 PANGBORN 18GN 18 CU FT TUMBLAST CLEANING MACHINE S/N 18GN-561  
 PANGBORN MODEL 26GNM TUMBLAST CLEANING MACHINE WITH FLOOR LOADER AND SHOT SYSTEM AND CONTROLS  
 WHEELABRATOR 14 CU FT TUMBLAST CLEANING MACHINE WITH FLOOR LOADER, 1- SHOT WHEEL AND SHOT SYSTEM AND CONTROLS



## HEAT TREAT

SALE  
#1 & #2

(2) 6' X 10' CAR BOTTOM HEAT TREAT FURNACES WITH GAS SYSTEM AND CONTROLS, 4 BURNERS PER SIDE  
(2) 6' X 12' CAR BOTTOM JOHNSTON HEAT TREAT FURNACE EQUIPPED WITH (3) BURNERS PER SIDE, BLOWER AND MOTOR AND GAS SYSTEM, CONTROLS WITH HONEYWELL DIGITAL READOUTS

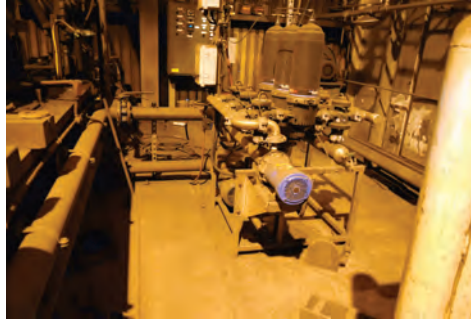
(2) JOHNSTON 6' X 6' X 10' BOX TYPE TEMPERING HEAT TREAT OVENS EACH EQUIPPED WITH GAS SYSTEM, BURNER, BLOWER AND CONTROLS WITH WATLOW DIGITAL READOUTS

(5) JOHNSTON 6' X 6' X 10' BOX TYPE QUENCH HEAT TREAT OVENS EACH EQUIPPED WITH GAS SYSTEM, BURNER, BLOWER AND CONTROLS WITH WATLOW DIGITAL READOUTS, HONEYWELL CHART RECORDERS AND JET RECIRCULATION SYSTEMS

WATER QUENCH PIT EQUIPPED WITH RECIRCULATION SYSTEM AND COOLING SYSTEM WITH ROOF MOUNTED COOLING TOWERS

LUCIFER 14" X 18" BOX OVEN EQUIPPED WITH HONEYWELL DIGITAL READOUTS

(4) WALK IN TYPE PREHEAT OVENS WITH CONTROLS HEAT TREAT BASKETS



## TABLES-SCISSOR LIFT

SALE  
#1 & #2

(12) 3' X 5' AND 4' X 6' HYDRAULIC SCISSOR LIFT TABLES

## AIR COMPRESSORS AND DRYERS

SALE  
#1 & #2



QUINCY MODEL QSI 1000 1000 CFM 300 HP WATER COOLED ROTARY SCREW TYPE AIR COMPRESSOR, DIGITAL READOUT

INGERSOLL RAND XLE RECIPROCATING AIR COMPRESSOR, 150 HP, SIZE 16X 10-7 WITH SUPPORT EQUIPMENT

INGERSOLL RAND TWO STAGE RECIPROCATING AIR COMPRESSOR, 150 HP WITH SUPPORT EQUIPMENT

INGERSOLL RAND MODEL SSR-EP60 60 HP SCREW TYPE AIR COMPRESSOR WITH INTELLISYS

ATLAS COPCO MODEL GAU117 150 HP SCREW TYPE AIR COMPRESSOR

QUINCY MODEL QSI 300 75 HP SCREW TYPE AIR COOLED AIR COMPRESSOR, 27587 HOURS

INGERSOLL RAND MODEL IRN60H-CC 60 HP SCREW TYPE AIR COMPRESSOR WITH DIGITAL READOUTS

QUINCY 40 HP MODEL QMAJATA31C SCREW TYPE AIR COMPRESSOR, 02082 HOURS

INGERSOLL RAND MODEL XLE AIR COMPRESSOR, 14 1/2- 9 X 7

INGERSOLL RAND MODEL TMS 0540 540 CFM REFRIGERATED AIR DRYER S/N 42529040

INGERSOLL RAND MODEL TMS 2000 2000 CFM REFRIGERATED AIR DRYER

INGERSOLL RAND MODEL SSR-EP200-2S SCREW TYPE AIR COMPRESSOR, 200 HP, 990 CFM

INGERSOLL RAND MODEL NVC600A400 600 CFM REFRIGERATED AIR DRYER

SULLIVAN PALATEK MODEL 40D 40 HP TANK MOUNTED AIR COMPRESSOR 6861 HOURS

ARROW MODEL A200-4 200 CFM AIR DRYER S/N 2451887

INGERSOLL RAND MODEL XRE TWIN RECIP AIR COMPRESSOR NOT IN SERVICE



## GRINDERS AND SAWS

SALE  
#1 & #2

(13) 14" AND 10" DOUBLE END PEDESTAL GRINDERS

(11) FOX MODEL G50 30" SNAG GRINDERS WITH SAFETY GUARDS

FOX 20" CUTOFF SAW WITH ENCLOSURE

(5) FOX 30" 40HP TABLE TYPE CUT OFF SAWS  
MARVEL #8 VERTICAL BAND SAW WITH POWER FEED



## WELDERS AND POWER SOURCES

(2) THERMAL DYNAMICS PAK 45 PLASMA UNITS

(6) MILLER CPC 1500 POWER SOURCES

(30+) MILLER DIMENSION 652 WELDERS

(2) AFTEK 2400 AMP POWER SOURCES

(4) VARIOUS ROD OVENS



## WELDING CELLS

SALE  
#2

CELL WITH ABB 6400 ROBOT AND POWER SUPPLY, 30" 50 HP CUT OFF SAW WITH TABLE, BURR GRINDER, TRIM PRESS, CLEATED BELT AND ENCLOSURE

CELL WITH MOTOMAN K10S ROBOT AND POWER SUPPLY, TABLE WITH SWIVEL AND ROTATION AND CLAMP, HOBART 350 AMP WELDER WITH WIRE FEEDER, ENCLOSURE

CELL WITH MOTOMAN SK6 ROBOT AND POWER SUPPLY, THERMAL DYNAMICS PAK45 PLASMA UNIT, ENCLOSURE

CELL WITH MOTOMAN SK6 ROBOT AND POWER SUPPLY, THERMAL DYNAMICS PAK45 PLASMA UNIT, ENCLOSURE

## WOOD CHIPPING SYSTEM

SALE  
#2

GSS 48" X 20' FEED BELT CONVEYOR WITH DRIVE, MOTOR AND CONTROLS

BLOAPCO MODEL CAX 2558 VP 25 HP SHREDDER WITH DRIVE, MOTOR AND CONTROLS

CHAMPION 5 HP VERTICAL TANK MOUNTED AIR COMPRESSOR WITH SUPPORT EQUIPMENT

24" X 30' CLEATED DISCHARGE BELT CONVEYOR WITH DRIVE, MOTOR AND CONTROLS

24" X 10' CLEATED DISCHARGE BELT CONVEYOR WITH DRIVE, MOTOR AND CONTROLS

## DUST COLLECTORS

SALE  
#1 & #2

BHA/GE APPROX. 36,000 CFM PULSE BAG DUST COLLECTOR WITH 125 HP MOTOR AND TWIN CITY SIZE 402 BLOWER S/N 07-236700-1-1 AND CONTROLS

MELROSE APPROX. 60,000 CFM CARBON ABSORPTION SYSTEM WITH 2- 200 HP MOTOR AND NEW YORK SIZE 44PLR BLOWERS S/N D09-225-100 RATED AT 54,000 CFM EACH AND CONTROLS

BAHNSON / HAWLEY NORFELT PULSE TYPE DUST COLLECTOR RATED AT 78,000 CFM WITH 200 HP DRIVE, MOTOR, NEW YORK SIZE 608III BLOWER S/N W-681-100 & CONTROLS

BAHNSON / HAWLEY PULSE TYPE DUST COLLECTOR RATED AT 25,000 CFM WITH 125 HP DRIVE, MOTOR, BLOWER & CONTROLS

PITTER METAL PULSE JET DUST COLLECTOR RATED AT 60,000 CFM WITH 200 HP DRIVE MOTOR, NEW YORK SIZE 608 III BLOWER S/N W-681-105 & CONTROLS

BAHNSON / HAWLEY NORFELT PULSE TYPE DUST COLLECTOR RATED AT 22,000 CFM WITH 60 HP DRIVE, MOTOR, NEW YORK SIZE 338III BLOWER S/N W-681-110 & CONTROLS

APPROX. 70,000 CFM CARBON ABSORPTION SYSTEM WITH 3- 200 HP MOTOR AND NEW YORK SIZE 44PLR BLOWERS S/N D09-225-100 RATED AT 54,000 CFM EACH AND CONTROLS

11- SHAKER DUST COLLECTORS FROM 5000 TO 50,000 CFM



## MAINTENANCE DEPARTMENT

SALE  
#1 & #2

(3) MAINTENANCE AREAS EACH WITH TOOLS, WELDERS, DRILLS, PIPE THREADERS, SAWS, PRESSES, TABLES, TORCHES, RACKING, IRON WORKERS, SPARE PARTS AND NUMEROUS OTHER ITEMS

# (2) ONLINE ONLY AUCTIONS

**INSPECT ONSITE AND BID ONLINE**

## MAJOR STEEL CASTING FOUNDRY

### PACIFIC STEEL CASTING

**ONSITE INSPECTION LOCATION: 1333 SECOND STREET, BERKELEY, CA 94710**

**SALE #1: BIDDING CLOSSES: THURSDAY, JUNE 14 AT 9:00 AM PDT**

**ONSITE INSPECTION DATES: JUNE 11, 12 & 13 OR BY APPOINTMENT ONLY**

**CONTENTS OF PLANT #1 & MOST OF PLANT #3**

**SALE #2: BIDDING CLOSSES: THURSDAY, AUGUST 16 AT 9:00 AM PDT**

**ONSITE INSPECTION DATES: AUGUST 13, 14 & 15 OR BY APPOINTMENT ONLY**

**CONTENTS OF PLANT #2 AND ANY REMAINING ITEMS, INSPECTION, SHIPPING, ROLLING STOCK, ETC.**



SALE #1 & #2

#### MAGNAFLUX

MAGNAFLUX MODEL SPEC CRV-20 20,000 AMP MAGNETIC PARTICLE INSPECTION MACHINE WITH BLACK LIGHT

MAGNAFLUX CRV 8 MAGNETIC PARTICLE INSPECTION MACHINE, 8000 AMP WITH ENCLOSURER AND SUPPORT EQUIPMENT

(4) MAGNAFLUX MODEL KRH-3D 3,000 AMP MAGNETIC PARTICLE INSPECTION MACHINE WITH BLACK LIGHT



SALE #1 & #2

#### MISC. ITEMS

HAND TOOLS, AIR AND ELECTRIC TOOLS, PALLET RACKING (HUNDREDS), SELF DUMPING HOPPERS, TOTE BOXES, OFFICE FURNITURE AND EQUIPMENT, SAND TANKS, DEPENDABLE 200# SAND HEATER, WIRE FEEDERS, BELT SANDERS, LECO SAMPLE CUTOFFS, 2' X 4' COMPACTION TABLE, ENTERPRISE 3036 PAPER BALER, 10- 4000# AND 6000# LIFT TABLES, FARO STERLING CMM, CEMENT MIXERS, OMCO FIN TYPE SAND COOLING SYSTEM, FLEXWEIGH 5' X 5' PLATFORM SCALE, GRANITE TABLES, HEIGHT GAUGES, MICROMETERS, TORCH OUTFITS, (2) DIAMOND DBD .25X REBAR BENDERS



SALE #2

#### PATTERN SHOP

COMPLETE WOOD AND METAL PATTERN SHOP WITH HAND BLAST, DRILLS, GRINDERS, SHOP PRESS, CHOP SAWS, BAND SAWS, SCOTCHMAN PORTA-FAB IRON WORKER, WELDERS, A-FRAME WITH HOIST, LAYOUT TABLES, TABLES AND VISES, DISC SANDERS, CLAUSING RADIAL ARM DRILL, ACCORD ENGINE LATHE, JET DUST COLLECTORS, ACER VERTICAL MILL, DEWALT RADIAL SAW, PANEL SAWS, MITER SAW, DRUM SANDERS, WOOD LATHES, PLANERS, JOINTERS, HAND AND ELECTRIC TOOLS, SUPPLIES, ETC.



VISIT ONLINE CATALOG FOR COMPLETE LIST OF FORKLIFTS



**UNITED**  
ASSET SALES

ROY GAMITYAN, AUCTIONEER

Office 818.264.4232 | Cell 818.388.6033  
roy@unitedassetsales.com

REICH  BROTHERS

www.reichbros.com

**FL** Sales Inc.  
Equipment, Appraisals, Liquidations, Auctions

www.flsales.com

**WWW.UNITEDASSETSALLES.COM**